

## INSTRUCTION MANUAL

### POWER TROWEL BT90H160 – BT90H270 – BT90E BT90HF160 – BT90HF270 – BT90YDK





# BETON TROWEL NV

---

Use this guide along with the parts lists attached to locate and identify components of your trowel. When ordering replacement parts, be sure to provide the model number and serial number from the trowel.

## **Copyright**

© Copyright 2011 by Beton Trowel.

## **Contact**

BETON TROWEL  
Nijverheidsstraat 10  
1840 Londerzeel  
BELGIUM  
[www.betontrowel.com](http://www.betontrowel.com)

---

Nijverheidsstraat 10  
1840 Londerzeel/Belgium  
Tel: +32 (0)52 315 350 - Tel: +32 (0)52 315 351  
Fax: +32 (0)52 315 359  
E-mail: [info@betontrowel.com](mailto:info@betontrowel.com)  
BE 0821.249.312  
[www.betontrowel.com](http://www.betontrowel.com)

BNP FORTIS: BE81 0015 9813 5624 - GEBABEBB  
ING: BE BBRUBEBB

## Foreword

### Quality assurance / machine break in

The machine is the product of extensive engineering development designed to give long life and unmatched performance. The trowels are shipped fully assembled, and only require filling with fuel and a brief check of lubricant levels in preparation for operation.

You can help ensure that your trowel will perform at top levels by observing a simple routing on first use. Consider that your new trowel is like a new car. Just as you would break in a new car to the road or any new machine to the job, you should start gradually and build up to full use. Learn what your machine can do and how it will respond. Refer to the engine manufacturer's manual for run-in times. Full throttle and control may be used after this time period, as allowed by material. This will serve to further break in the machine on your specific application, as well as provide you with additional practice using the machine.

We thank you for the confidence you have placed in us by purchasing a Beton Trowel machine and wish you many years of satisfied use.

## Table of contents

<b>Foreword</b>	<b>3</b>
<b>Operation</b>	<b>5</b>
1 Use	5
2 Safety precautions	5
3 BT90E	6
4 OPERATION (Floating)	7
5 OPERATION (Finishing)	7
6 STARTING PROCEDURE: *WARM CLIMATE	7
7 STARTING PROCEDURE: *COLD CLIMATE	8
8 STOPPING PROCEDURE	8
9 TRANSPORTING	8
10 Lubrication	8
11 Storage	9
<b>Maintenance</b>	<b>10</b>
1 Preventative maintenance and routine service plan	10
2 Maintenance plan	11
3 Service	12
<b>Labels</b>	<b>13</b>
<b>Specifications</b>	<b>14</b>
1 Technical data sheet	14
2 Parts	15-31
<b>Declaration of Conformity</b>	<b>32</b>

## Operation

### 1 Use

The trowel has been developed to float and finish the edges of concrete floors, up to perimeter walls, around columns and small areas, eliminating tiring hand troweling and increasing overall productivity and quality.

### 2 Safety precautions

- ❖ Always keep unauthorized, inexperienced, untrained people away from this machine.
- ❖ Rotating and moving parts will cause injury if contacted. Make sure guards are in place. Keep hands and feet away from moving parts.
- ❖ Fuel the machine only when the engine is stopped, using all necessary safety precautions.
- ❖ The engine must always be stopped before attempting any repair or adjustments. Ignition switch should be off.
- ❖ To avoid slipping and loss of control when starting the trowel, the operator should maintain good footing. It is recommended that the operator wear safety shoes for added protection.
- ❖ Be careful when working around pipes or ducts protruding from the floor or slab edges. If the trowel blades hit such obstacles, damage to the machine or possible operator injury may result.
- ❖ When starting the machine, do not exceed 1/3 throttle position. A higher setting may cause the centrifugal clutch to engage and the handle to rotate.
- ❖ Be careful not to come in contact with the muffler when the engine is hot, serious burns may result!
- ❖ Over time, the blades will form a sharp edge. Be careful when handling the old blades.



Never operate the machine in an explosive atmosphere, near combustible materials or where ventilation does not clear exhaust fumes. Repair fuel leaks immediately. Refer to your engine owner's manual for more safety instructions.

### **3 BT90E Electric Power Trowel Operating Instructions.**

The BT90 Electric 230v Power Trowel is driven by a 2.2 Kw Motor. As such it requires a correct power source to operate the machine. Note that the machine can draw as much as 24 Amperes on initial start up if the machine has been standing stationary on wet concrete.

The plug socket provided on the machine is the EU blue three pin safety 32 amp socket. Plug in your extension cable into the socket. Please ensure the extension cable is not coiled nor unreasonably long as this will cause power drop to the machine.

To start rotation of the machine pull in the red hand lever on the left side of the handle bar. To increase or lower speed use the speed dial on the right side of the handle bar.

For emergency stop release the red lever.

When operating the machine ensure the power cable is running over the handle bar and always behind the machine to avoid contact of the cable with the blades. If contact is made then immediately stop the machine and disconnect the extension cable and inspect the insulation. If it is damaged then do not continue to use the machine until the cable is replaced.

If the cable is badly damaged or if the amperes to the machine are insufficient then the machine has a trip switch that will cut off the power.

Special Note: If the power trowel is fitted with a float pan then the machine may settle into the wet surface of the concrete and this will create a suction that will put resistance on the rotation of the electric machine. To avoid this break the machine free of the concrete prior to starting.

## 4 OPERATION (Floating)

When the slab has set sufficiently firm that the operator's footprint leaves a very slight depression on the surface of the slab, it is ready for the floating operation.

Guiding the machine on the slab is very simple, a slight upward lift of the handle causes the machine to travel to the left. Holding the handle in the neutral position, will slowly cause the machine to spin in one spot. Slight downward pressure on the handle causes the machine to travel to the right. Best results are obtained by covering approximately 4" on each turn. In other words, let the machine move right or left, backwards or forwards, approximately 4" with each revolution of the trowels. To fill a hole or cut down a hump, move the unit back and forth over the problem area.

Under normal operating conditions the machine should cover as much as 1000 sq. ft. in about 15 minutes. It is recommended that a slight tension on the trowel control cable, (but *not* a definite tilt), during the floating operation will cause the machine to operate much smoother. After the floated slab has set sufficiently, it is ready for the finishing operation.



### CAUTION:

Do not let the machine stand in one spot on the soft cement. Lift from the slab when the floating operation is complete.

## 5 OPERATION (Finishing)

When starting the finishing operation, never set the trowels up over 1/4" pitch.

After the floating operation, the first thing to do is to remove the floating disc from the blades. Clean the blades, spider plate and disc from cement paste collected during the floating operation. Increase the blade pitch up to a maximum of 1 cm for the first finishing operation and then continue to increase the pitch on the following finishing operations. Continue the finishing passes until you obtain the desired floor finish. The time required between each finishing pass is again dependent on the weather conditions and water content of the concrete etc. If some areas of the concrete set/harden too fast you may apply a small amount of water using a hand brush as an aid to achieving the finish.

## 6 STARTING PROCEDURE: \*WARM CLIMATE

Open fuel valve on gas tank. Set throttle lever to "Fast" idle position, set choke to closed position, start engine. Open choke slightly to prevent flooding. Move to "Open" or "Run" position when engine is warm, increase throttle to maximum operation position (3600 rpm).

## 7 STARTING PROCEDURE: \*COLD CLIMATE

Follow same procedure as above but allow longer warm-up period – 3 to 5 minutes. In cold weather, oil is much heavier to move and requires more time to work its way into the moving parts. If maximum power is not attained, allow further warm-up time.

## 8 STOPPING PROCEDURE

- ❖ Throttle engine down.
- ❖ Turn off stop switch.

## 9 TRANSPORTING

When transporting the trowel, always keep the handle folded and the blades flat on the floor to prevent damage to the pitch control system. Always keep the floating disc underneath the blades to protect them against damage.



### CAUTION:

Never lift the trowel by the rotating ring; use the hoist hook or handle provided on the trowel. Remove the float disc when lifting machine more than 100cm (40in). The floating disc could fall off.

## 10 LUBRICATION

- ❖ **ENGINE OIL:** The long life and successful operation of any piece of machinery is dependent on frequent and thorough lubrication. Before using the trowel, always check your engine for oil. Use proper engine oil as recommended in the engine manufacturer's manual. Fill crankcase to levels as recommended.
- ❖ **SPIDER PLATE :** The trowel arm on the spider plate does not require lubrication. If a trowel arm becomes jammed, this is probably due to a bent arm, which will require replacement. Appropriate "winterize" steps should be taken if the machine is going to be stored for long periods of time.
- ❖ **GEARBOX:** In operation the gearbox lubricant is in a fluid state. When the machine is stopped the lubricant returns to a gel state. It will only be necessary to inspect the sealed components if the outside of the gearbox gets too oily or otherwise shows evidence of a leak. If this happens, clean the machine thoroughly and look for leaks. Effect necessary repairs immediately. Use SHELL TIVELA COMPOUNDS 'A' (0.3L, 10.1oz.) gear oil or equivalent to top up the gear box after any maintenance to the internal components.



## 11 STORAGE

The following steps should be taken to prepare your trowel for extended storage.

- ❖ Close fuel shut off valve.
- ❖ Siphon excess gasoline from tank.
- ❖ Start engine until it stops from lack of fuel. This will use up all the fuel in the carburetor and prevent formation of deposits due to evaporation of fuel.
- ❖ Remove spark plug and pour 2 oz. of SAE-30 or SAE-40 motor oil into the cylinder. Slowly crank the engine 2 or 3 times to distribute the oil throughout the cylinder. This will help prevent rust during storage. Replace spark plug.
- ❖ Store the unit in an upright position in a cool, dry, well ventilated area.

## Maintenance

### 1 Preventative maintenance and routine service plan.

This trowel has been assembled with care and will provide years of service. Preventative maintenance and routine service are essential to the long life of your trowel. Your dealer is interested in your new machine and has the desire to help you get the most value from it. After reading through this manual thoroughly, you will find that you can do some of the regular maintenance yourself. However, when in need of parts or major service, be sure to see Beton Trowel.

- ❖ **AIR CLEANER** - Keep air filter clean at all times. Wash away dust and debris using a non-oil based cleaning solvent. Let the filter dry before re-installing.
- ❖ **LUBRICATION** – Always check engine oil regularly. Use proper engine oil as recommended. See chart on this page. Fill crankcase to levels as recommended in manufacture's engine manual.
- ❖ **SPARK PLUG** – Check and clean spark plugs regularly. A fouled, dirty or carboned spark plug causes hard starting and poor engine performance. Set spark plug gap to recommended clearance. Refer to engine manual.
- ❖ **BELT TENSION – IMPORTANT!**

When the engine is switched off, and the machine has stopped, the normal belt play should be loose. This is due to the clutch type. When the machine is running at full throttle, the clutch will close in, which tightens the belt causing the gearbox to engage.

When adjusting the belt make sure that the clutch is in alignment with the follower pulley. Secure belt guard. Tighten all engine mount bolts, and tighten lock nuts.

## 2 Maintenance plan






Routine Service Intervals		Each use	After 1.5 months or 50 hrs	Each 3 months or 100 hrs	Each 6 months or 200 hrs	Each 9 months or 300 hrs	Each 12 months or 400 hrs
<b>General Inspection:</b>							
Guards	Check		o	o	o	o	o
Warning stickers	Check		o	o	o	o	o
Test run	Check operation		o	o	o	o	o
<b>Controls:</b>							
Dead-man switch operation	Check	o	o	o	o	o	o
Pitch control assembly	Check	o	o	o	o	o	o
	Lubricate		o	o	o	o	o
<b>Engine:</b>							
Engine oil	Check Level	o	o	o	o	o	o
	Change		o		o		o
Engine oil filter	Replace				o		o
Oil cooler	Clean			o	o	o	o
Cooling Fins	Clean		o	o	o	o	o
Air cleaner	Check - clean	o	o	o	o	o	o
	Replace						o
Air Intake Line	Check				o		
	Replace						2 yrs
Fan Belt	Check tightness				o		o
	Replace						500 hrs
Valve clearance	Check-adjust				o		o
Fuel filter	Check & Clean			o	o	o	o
	Replace				o		o
Fuel Tank	Clean						500 hrs
Engine wiring	Check						o
<b>Drive Train:</b>							
Clutch / Pulley operation	Check	o	o	o	o	o	o
Spider plate assembly	Check	o	o	o	o	o	o
	Lubricate				o		o
V-Belt	Check	o	o	o	o	o	o
Blades	Check	o	o	o	o	o	o
<b>Gearbox:</b>							
Gearbox oil	Check Level				o		o
	Change	o			o		o
Gearbox breathers	Check operation			o	o	o	o

### 3 Service

Due to the nature and environment of use, the machines could be exposed to severe operating conditions. Some general maintenance guidelines will extend the useful life of your trowel.

- ❖ The initial service for your trowel should be performed after 25 hours of use, at which time your mechanic (or authorized repair shop) should complete all of the recommended checks in the schedule above.
- ❖ Regular service according to the schedule above will prolong the life of the trowel and prevent expensive repairs.
- ❖ Keeping your trowel clean and free from debris is the single most important regular maintenance operation, over and above the checks in the service schedule above, that can be performed. After each use your trowel should be cleaned to remove any dust and debris from the undercarriage and surrounding components. Use of a power washer will make clean up quick and easy, especially if a non-stick coating was applied prior to use.
- ❖ In the Service Schedule above, items that should be checked, replaced or adjusted are indicated by “o” in the appropriate column. Not all trowel models include the same features and options and as such not all service operations may have to be performed. For ease of recording place a checkmark (✓) through the “o” when the item is complete. If an item is not required or not completed place an “x” through the “o” in the box.

## Labels

SAFETY PRECAUTIONS	
	<p><b>!</b> <b>DANGER</b></p> <p><b>EXPLOSION HAZARD</b> Never operate the machine in an explosive atmosphere, near combustible materials or where ventilation does not clear exhaust fumes.</p>
	<p><b>WARNING</b></p> <p><b>BURN HAZARD</b> Never come into contact with the engine or muffler when engine is operating or shortly after it is turned off. Serious burns may occur.</p>
	<p><b>!</b> <b>CAUTION</b></p> <p><b>ROTATING HAZARD</b> Never place hands or feet inside safety guard rings. Serious injury will result from contact with rotating blades.</p>
	<p><b>!</b> <b>CAUTION</b></p> <p><b>MOVING PARTS</b> Before starting the machine ensure that all guards and safety devices are in place and functioning properly.</p>
	<p><b>!</b> <b>ATTENTION</b></p> <p><b>READ OWNERS MANUAL</b> Read and understand operator's manual before using this machine. Failure to follow operating instructions could result in serious injury or death.</p>

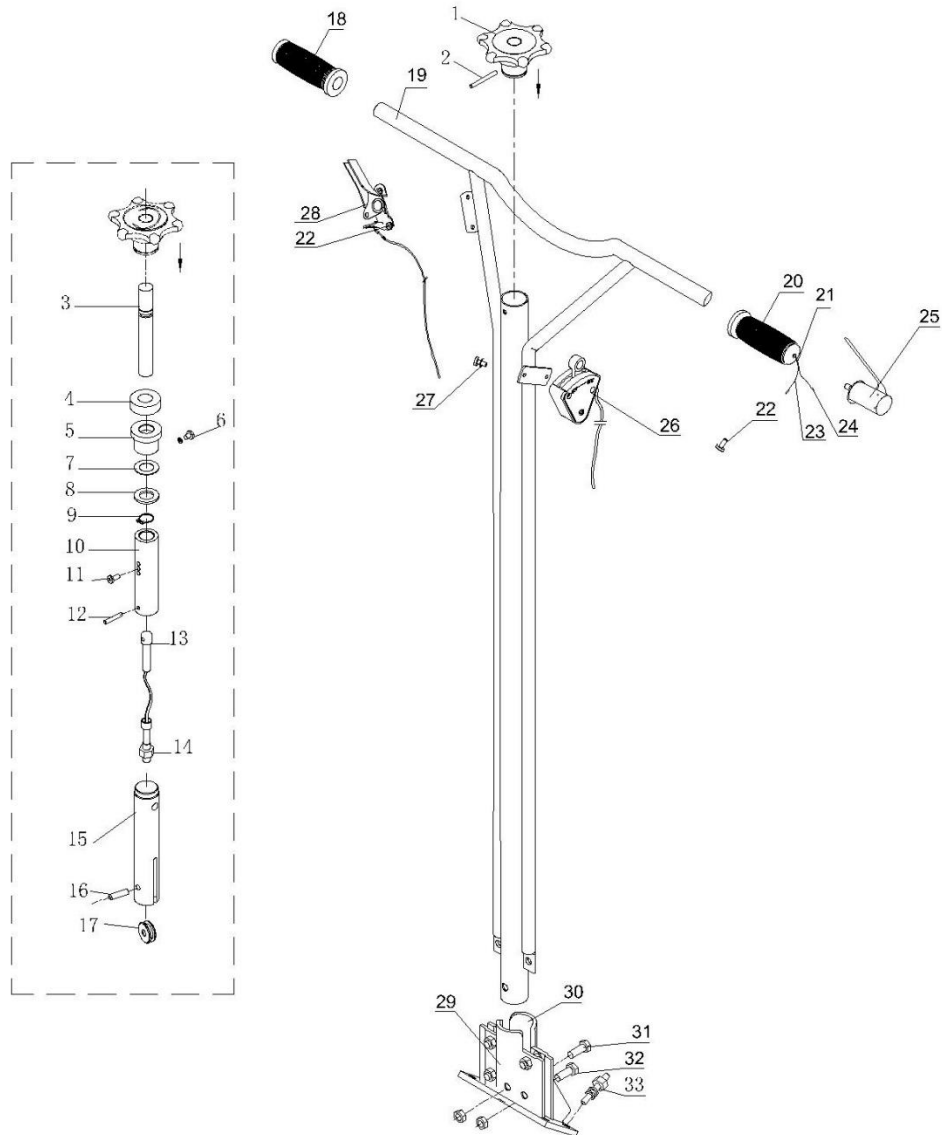
## Specifications

### 1 Technical data sheet

<b>MODEL</b>	BT90H(F)160	BT90H(F)270	BT90E
OPERATING DIAMETER	90 CM (36")	90 CM (36")	90 CM (36")
ENGINE OPTIONS	HONDA GX160 5.5 HP	HONDA GX270 9 HP	ELECTRIC 3 PHASE 2.2 KW VARIABLE SPEED
WEIGHT	78 KG	82 KG	84 KG
HANDLE VIBRATION	1.1 – 1.5 M/S	1.1 – 1.5 M/S	1.1 – 1.5 M/S
SOUND	97 – 103 LWA (dB) 82 -86 LPA (Db)	97 – 103 LWA (dB) 82 -86 LPA (Db)	

## 2 Parts

### Standard Handle Assembly.

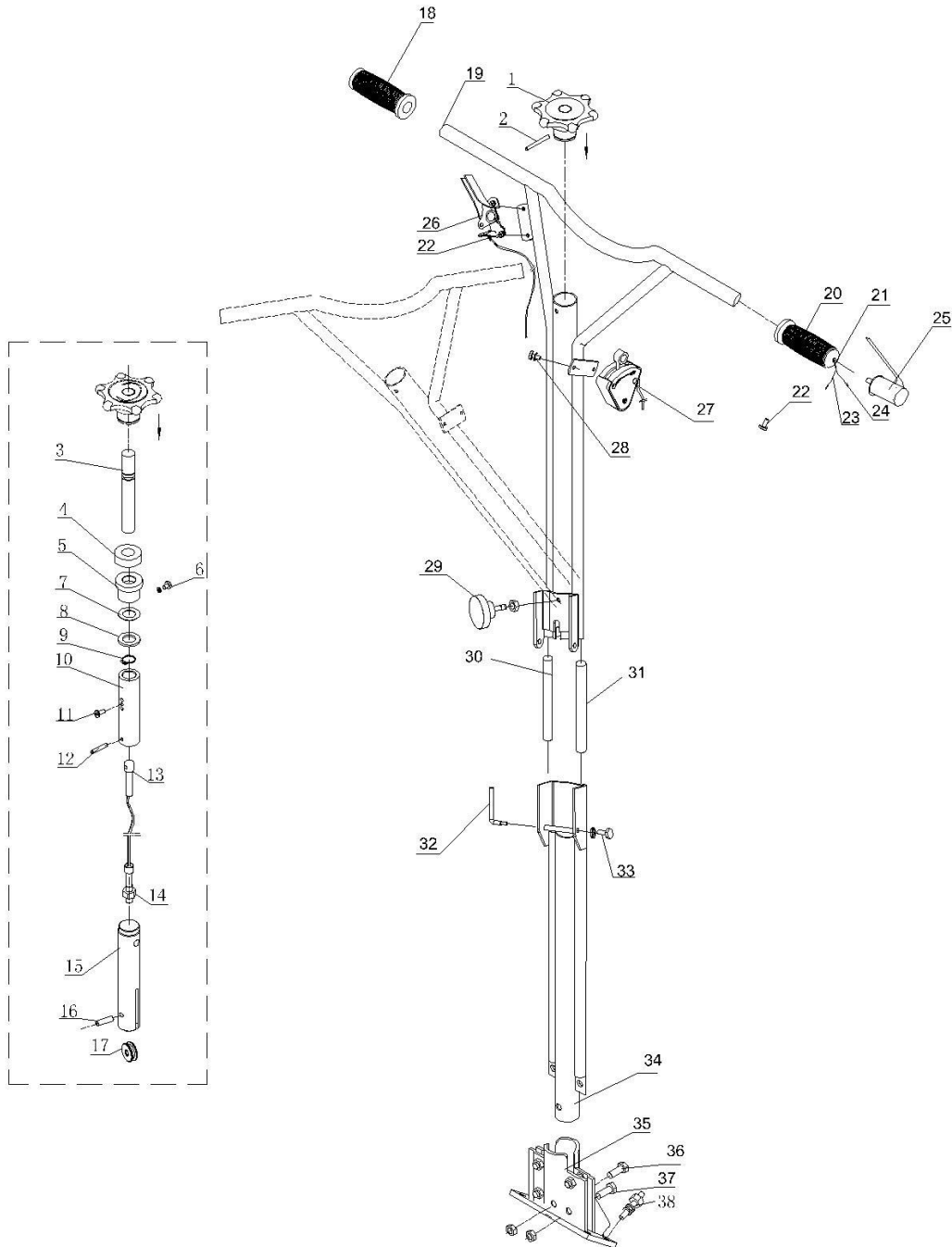


Item No.	Part No.	Description	Qty.
1	4365501	KNOB	1
2	9024	PIN	1
3	4365503	THREADED SHAFT	1
4	9025	BEARING	1
5	4365502	BUSHING	1
6	9026	BOLT	1
	9022	SPRING WASHER	1
7	9033	SPRING WASHER	1
8	4365504	WASHER	1
9	9027	WASHER	1
10	4365505	ALUMINIUM BUSHING	1
11	9028	BOLT	1
12	9030	PIN	1
13	4405512	PITCH CONTROL CABLE	1
14	9016	NUT	1
15	4365511	CABLE WHEEL BUSHING	1
16	9031	PIN	1
17	4365508	CABLE WHEEL	1
18	9035	GRIP	1
19	4405100	HANDLE WELDING PART	1
20	9035a	GRIP	1
21	9126	SLEEVE	1
22	9021	BOLT	3
	9011	WASHER	2
	9128	SPRING WASHER	1
23	9119	WIRE	2
24	9570	WIRE CONNECTOR	2
25	1165200A	DEADMAN SWITCH	1
26	4365200	SAFTY SWITCH	1
27	9010	BOLT	2
	9011	WASHER	2
28	4365400	THROTTLE CONTROL	1
29	4365301	UPPER BRACKET	1



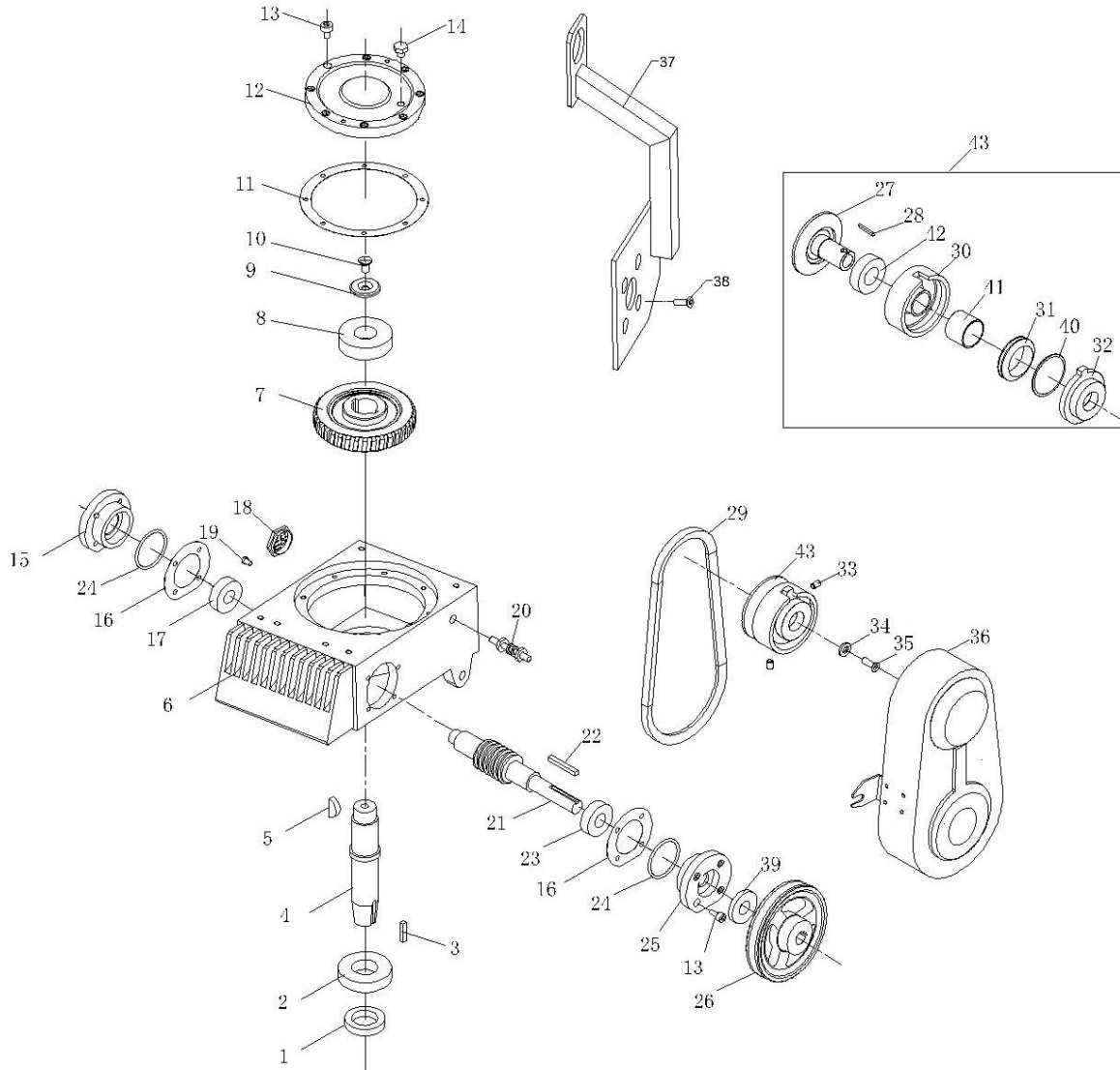
30	4405303	LOWER BRACKET	1
31	9017	BOLT	1
32	9018	BOLT	4
	9016	NUT	5
33	9044	BOLT	4
	9045	NUT	4
	9046	SPRING WASHER	4
	9047	WASHER	4

## Folding handle assembly



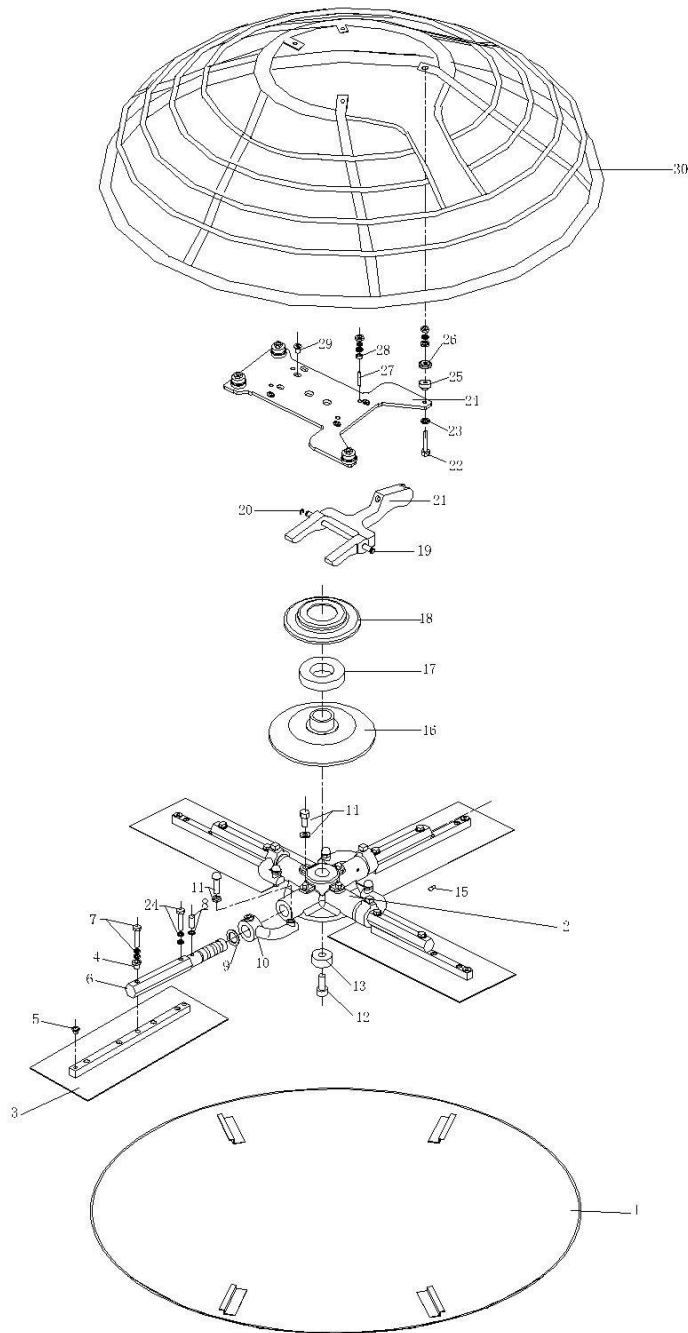
Item No.	Part No.	Description	Qty.
1	4365501	KNOB	1
2	9024	PIN	1
3	4365503	THREADED SHAFT	1
4	9025	BEARING	1
5	4365502	BUSHING	1
6	9026	BOLT	1
	9022	SPRING WASHER	1
7	9033	SPRING WASHER	1
8	4365504	WASHER	1
9	9027	WASHER	1
10	4365505	ALUMINIUM BUSHING	1
11	9028	BOLT	1
12	9030	PIN	1
13	4405512	PITCH CONTROL CABLE	1
14	9016	NUT	1
15	4365511	CABLE WHEEL BUSHING	1
16	9031	PIN	1
17	4365508	CABLE WHEEL	1
18	9035	GRIP	1
19	4405100S	UPPER BARE HANDLE	1
20	9035a	GRIP	1
21	9126	SLEEVE	1
22	9021	BOLT	3
	9011	WASHER	2
	9128	SPRING WASHER	1
23	9119	WIRE	2
24	9570	WIRE CONNECTOR	2
25	1165200A	DEADMAN SWITCH	1
26	4365400	THROTTLE CONTROL	1
27	4365200	SAFTY SWITCH	1
28	9010	BOLT	2
	9011	WASHER	2
29	9381	LOCKING KNOB	1
	9045	NUT	1

30	9800M	STEEL SPRING	1
31	9800M	STEEL SPRING	1
32	4365110	LOCKING GRIP	1
33	9098	BOLT	1
	9038	WASHER	1
34	4405100X	LOWER BARE HANDLE	1
35	4405300	BRACKET	1
36	9017	BOLT	1
37	9018	BOLT	4
	9016	NUT	5
	9044	BOLT	4
38	9045	NUT	4
	9046	SPRING WASHER	4
	9047	WASHER	4



Item No.	Part No.	Description	Qty.
1	9050	SEAL	1
2	9048	BEARING	1
3	9051	PIN	1
4	4364011	MAIN SHAFT	1
5	9052	KEY	1
6	4364003	GEARBOX CASING	1
7	4364010	WORM GEAR	1
8	9049	BEARING	1
9	4364006	WASHER	1
10	4364007	BOLT	1
11	4364008	PLASTIC SHIMMING	1
12	4364005	GEARBOX COVER	1
13	9043	BOLT	16
14	4364100	RELEASE VALVE	1
15	4364014	BEARING FLANGE	1
16	4364015	PLASTIC SHIMMING	2
17	9063B	BEARING	1
18	9064	SIGHT GLASS	1
19	9053	BOLT	2
20	9044	BOLT	1
	9059	NUT	2
	9046	SPRING WASHER	1
	9047	WASHER	1
21	4364013	COUNTER SHAFT	1
22	9054	KEY	1
23	9057	BEARING	1
24	9056	SEAL	2
25	4364012	BEARING FLANGE	1
26	4362001	PULLEY	1
	4462001	PULLEY(9HP)	1
27	4363001	SPINDLE	1
	4463001	SPINDLE(9HP)	1
28	9076	KEY	1
	9155	KEY(9HP)	1
29	9061	BELT	1

	9161	BELT(9HP)	1
30	4363002	DRUM	1
	4463002	DRUM(9HP)	1
31	4363004	WEIGHT	1
	4463004	WEIGHT(9HP)	1
32	4363003	FACE PLATE	1
	4463003	FACE PLATE(9HP)	1
33	9078	BOLT	1
	9293	BOLT	1
	9062	BOLT(9HP)	1
	9478	BOLT(9HP)	1
34	4363005	WASHER	1
35	9079A	BOLT	1
	9146	BOLT(9HP)	1
36	4362100	BELT GUARD	1
	4362100A	BELT GUARD(9HP)	1
37	4368000	HOOK LIFT	1
	4408000	HOOK LIFT(9HP)	1
38	9079	BOLT	4
	9151	BOLT(9HP)	4
	9037	SPRING WASHER	5
	9038	WASHER	5
39	9055	SEAL	1
40	9077	SPRING	1
	9335	SPRING(9HP)	1
41	4363006	BUSHING	1
	4463006	BUSHING(9HP)	1
42	9075	BEARING	1
	9142	BEARING(9HP)	1
43	4363000	CLUTCH	1
	4463000	CLUTCH(9HP)	1

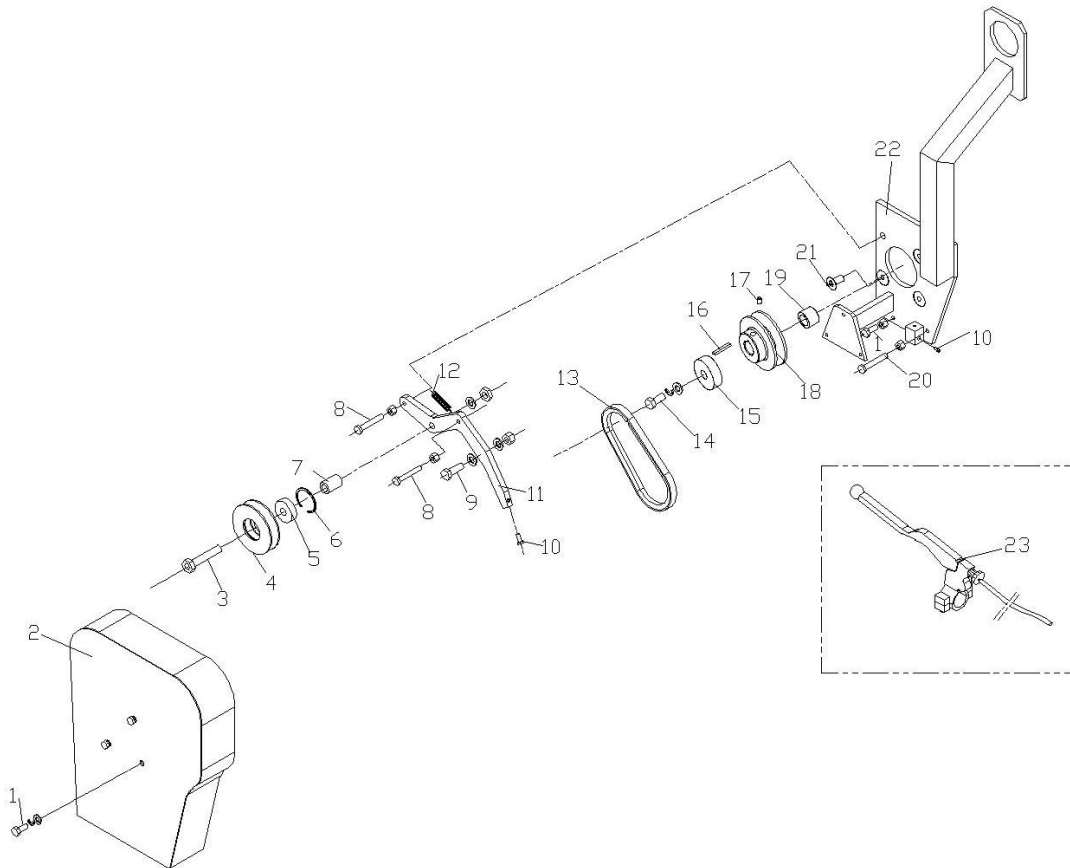




Item No.	Part No.	Description	Qty.
1	FP9408	PAN	1
2	4366005	SPIDER PLATE	1
3	F90416	BLADE	4
4	4366007a	ADJUSTING NUT	4
5	4366911	BLOCK	4
6	4366001A	TROWEL ARM	4
7	9215	BOLT	4
	9037	SPRING WASHER	4
	9038	WASHER	4
8	9065	BOLT	4
	9059	NUT	4
9	9073	SEAL	4
10	4366006	LIFTING LEVER	4
11	9067	BOLT	4
	9059	NUT	4
12	9410A	BOLT	1
13	4366004	BUSHING	1
14	9066	BOLT	4
	9046	SPRING WASHER	4
15	9069B	GREASE NIPPLE	4
16	4366003A	PRESSURE PLATE	1
17	9070A	BEARING	1
18	4366002A	PRESSURE PLATE COVER	1
19	4365509	YOKE ARM SHAFT	1
20	9034	RETAINER RING	2
21	4365510	YOKE ARM	1
22	9040	BOLT	4
	9037	SPRING WASHER	4
	9038	WASHER	4
	9036	NUT	4
23	9039	WASHER	4
24	4369000	ENGINE PLATE	1
	4369100	ENGINE PLATE(9HP)	1
25	4364009	RUBBER BUSHING	4
26	4364002	BUSHING COVER	4

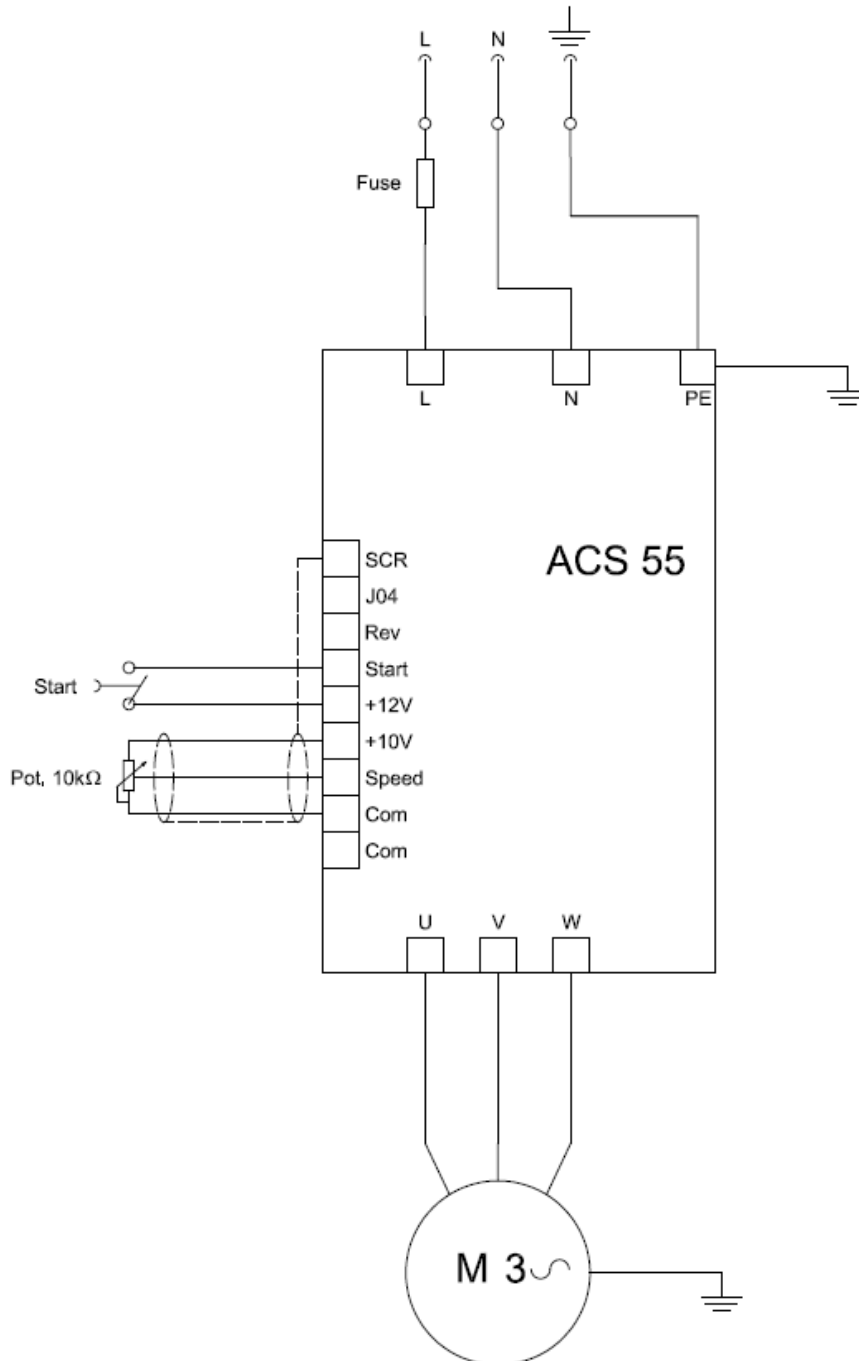
27	9041	BOLT	4
	9044	BOLT(9HP)	4
	9037	SPRING WASHER	4
	9046	SPRING WASHER(9HP)	4
	9038	WASHER	4
	9047	WASHER(9HP)	4
	9036	NUT	4
	9045	NUT(9HP)	4
28	4364004	WASHER	4
	9159	WASHER(9HP)	4
29	9042	BOLT	6
30	2367000	GUARD RING	1

## SPECIAL STOP SYSTEM BT90. (REPLACES CLUTCH WITH JOCKY PULLEY DRIVE SYSTEM)

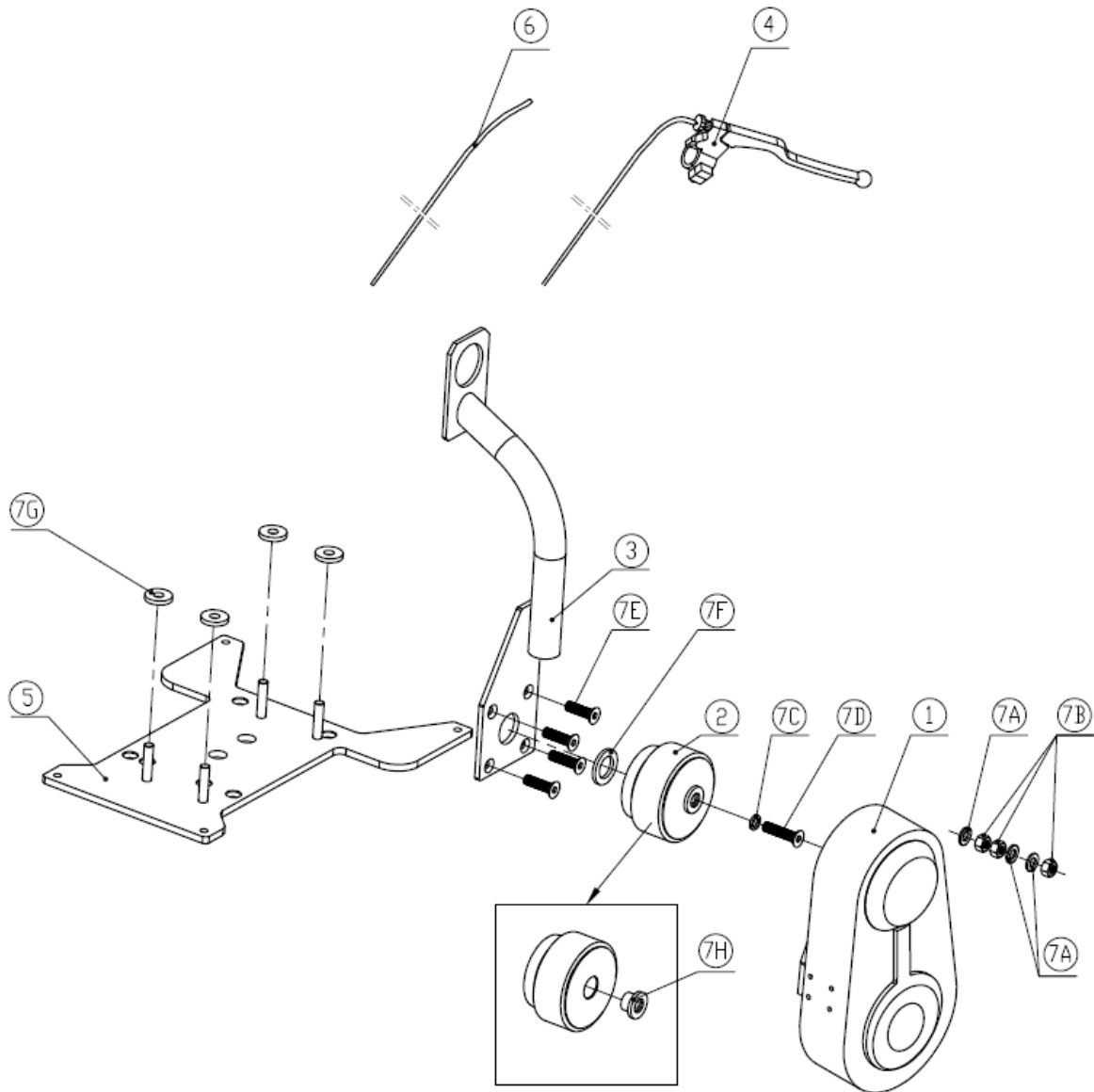


Item No.	Part No.	Description	Qty.
1	9220	BOLT	4
	9330	WASHER	3
	9022	SPRING WASHER	3
	9448	NUT	1
2	363422	BELT GUARD	1
3	9321	BOLT	1
	9047	WASHER	1
	9059	NUT	1
4	363491	TENSIONER	1
5	9474	BEARING	1
6	9412	RETAINER RING	1
7	363490	BUSHING	1
8	9746	BOLT	2
	9448	NUT	2
9	9747	BOLT	1
	9038	WASHER	2
	9138	NUT	1
10	9010	BOLT	2
11	363489	PLATE	1
12	9411B	SPRING	1
13	9587	BELT	1
14	9096	BOLT	1
	9103	SPRING WASHER	1
	9038	WASHER	1
15	363499	WASHER	1
16	9930	KEY	1
17	9101	BOLT	1
18	363498	PULLEY	1
19	47867	WASHER	1
20	9987	BOLT	1
	9448	NUT	1
21	9079	BOLT	3
22	363509	HOOK LIFT	1
23	363518a	GRIP	1

## ELECTRIC WIRING DIAGRAM



## PARTS SPECIAL TO MODEL BT90YDK YANMAR LD48 DIESEL ENGINE



Item No.	Part No.	Description	Qty.
1	48N2100	Belt guard	1
2	B4363000	Clutch	1
3	48N8000	Lift hook	1
4	48N5200	Shut off assy	1
5	48N9000	Engine deck	1
6	9522A	Throttle cable	1
7	48NA	Bolt kits	1
7A	9047	Washer	3
7B	9091	Nut	3
7C	9037	Spring washer	1
7D	9375	Bolt	1
7E	9079	Bolt	4
7F	48N3102	Spacer	1
7G	48N3101	Spacer	4
7H	48N3007	Bushing	1

## Declaration of Conformity / Certificat de conformite / Gelijkvormigheidscertificaat / Declaracion de Conformidad / Declaracao de Concormidade / Dichiarazione Di Conformita

Model : BT90

**We Beton Trowel NV**

Declare under our sole responsibility that the product to which this declaration relates is in conformity with the following standards or other normative documents.

Declarons sous notre responsabilite que le produit cette declaration est conforme aux norms suivantes ou d'autres documents habituels.

Verklaren onder onze verantwoordelijkheid dat het product naar welke de verklaring verwijst conform de volgende standards of anders gebruikelijke documenten is.

Declaramos bajo nuestra unica responsabilidad que el producto en lo que esta declaracion concierne, es conforme con la siguiente normative u otros documentos.

Declara sob sua responsabilidade que o produto a quem esta declaracao interessar, esta em conformidade com os seguintes documentos legais ou normas directivas.

Dichiariamo sotto la ns. Unica responsibilita che il prodotto al quale questa dichiarazione si riferisce, e fabbricato in conformita ai seguenti standard e documenti di normative.

**EN 349.2008:A1:2008 EN 12100:2010 EN12649:2008+A1:2011 EN ISO 5349-2:2001 +A1:2015**

Following the provisions of Directives:

Suivant les directives determinees:

Volgens de vastgestelde richtlijnen:

Siguiendo las directivas:

No sequimento das clausulas da Directivas

Seguendo quanto indicato dalla Direttivas:

**2006/42/EC Machinery Directive**

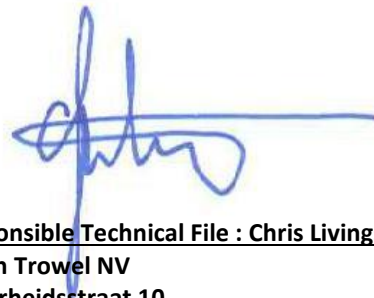
**2000/14/EC Noise Directive**

**2001/95/EC General Product Safety Directive**

**2002/95/EC Reduction of Hazardous Waste Directive**

**LVD2014/35/EU Low Voltage Directive**

**2004/30/EU Electromagnetic Compatibility**



**Responsible Technical File : Chris Livingston for**

**Beton Trowel NV**

**Nijverheidsstraat 10**

**B-1840 Londerzeel**

**Belgium**

Tel 0032 52315350

Fax0032 52315359

25<sup>th</sup> August 2016