

INSTRUCTION MANUAL

RIDE ON POWER TROWEL

BT900-2PFH24 Low rider

BT900-2OLH24 Overlapper

BT900H-2PFH24 Low rider



Nijverheidsstraat 10, 1840 Londerzeel/Belgium

Tel: +32 (0)52 315 350 - Tel: +32 (0)52 315 351 - Fax: +32 (0)52 315 359

E-mail: info@betontrowel.com - www.betontrowel.com

BE 0821.249.312



Use this guide along with the parts lists attached to locate and identify components of your trowel. When ordering replacement parts, be sure to provide the model number and serial number from the trowel.

Copyright

© Copyright 2011 by Beton Trowel.

Contact

BETON TROWEL
Nijverheidsstraat 10
1840 Londerzeel
BELGIUM
www.betontrowel.com

Nijverheidsstraat 10, 1840 Londerzeel/Belgium
Tel: +32 (0)52 315 350 - Tel: +32 (0)52 315 351 - Fax: +32 (0)52 315 359
E-mail: info@betontrowel.com - www.betontrowel.com
BE 0821.249.312

1. FOREWORD

Quality assurance / machine break in

The Beton Trowel Ride-on Trowel is the product of extensive engineering development designed to give long life and unmatched performance. Once machines are fully assembled, a run-in test is performed to ensure quality standards of the highest level. A series of operational tests are conducted on concrete, incorporating a phase of operations at 1/2 to 3/4 throttle and a final run phase at full throttle for a minimum of 20 minutes.

You can help ensure that your Ride-on will perform at top levels by observing a simple routing on first use. Consider that your new Ride-on Trowel is like a new car. Just as you would break in a new car to the road or any new machine to the job, you should start gradually and build up to full use. Learn what your machine can do and how it will respond. Refer to the engine manufacturer's manual for run-in times. Full throttle and control may be used after this time period, as allowed by material. This will serve to further break in the machine on your specific application, as well as provide you with additional practice using the machine.

We thank you for the confidence you have placed in us by purchasing a Beton Trowel Ride-on Trowel and wish you many years of satisfied use.

2. TABLE OF CONTENTS

1. Foreword	3
2. Table of contents	4
3. Safety Precautions	6
4. Assembly Instructions.....	8
Battery – Shipped dry – No acid	8
Steering handle assembly.....	8
Pitch control Assembly	8
Seat Assembly.....	8
Transporter Assembly.....	8
5. Operating Instructions.....	9
Starting procedures – warm temperatures	9
Starting procedures – cold temperatures	9
To Stop engine.....	9
Steering.....	9
Float/Trowel pitch setting	10
Blade synchronization (specially modified units only)	10
Transporter Use.....	10
6. Trowel arm adjustment fixture	Fout! Bladwijzer niet gedefinieerd.
7. Adjustment Procedure	Fout! Bladwijzer niet gedefinieerd.
Trowel arm adjustment screw.....	Fout! Bladwijzer niet gedefinieerd.
8. Maintenance.....	11
Preventative maintenance and routine service plan	11
GENERAL.....	11
AIR CLEANER	11
SPARK PLUG	11
BELT TENSIONING SPECIFICATIONS.....	11
Lubrication.....	11
ENGINE OIL	11
SPIDER PLATE.....	12
GEARBOX	12

TO CHANGE GEARBOX OIL.....	12
GREASE FITTINGS.....	12
Maintenance plan.....	13
Service	15
9. Labels.....	16
10. Parts.....	18
Framework and guard ring	18
Power system	21
Steering system	23
Hydraulic system	24
Gearbox assembly left	26
Gearbox assembly right.....	29
Oil house.....	32
Fuel en water system.....	34
Clutch assembly.....	35
Declaration of Conformity.....	36

3. SAFETY PRECAUTIONS

- ❖ Always keep unauthorized, inexperienced, untrained people away from this machine.
- ❖ Rotating and moving parts will cause injury if contacted. Make sure guards are in place. Keep hands and feet away from moving parts.
- ❖ Fuel the machine only when the engine is stopped, using all necessary safety precautions.
- ❖ The engine must always be stopped before attempting any repair or adjustments. Ignition key should be off.



Danger: Never operate the machine in an explosive atmosphere, near combustible materials or where ventilation does not clear exhaust fumes. Repair fuel leaks immediately.

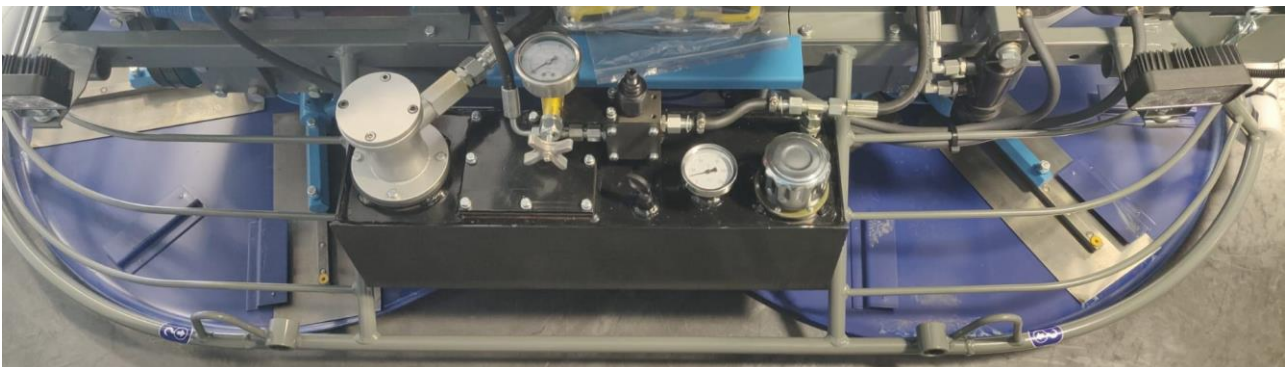
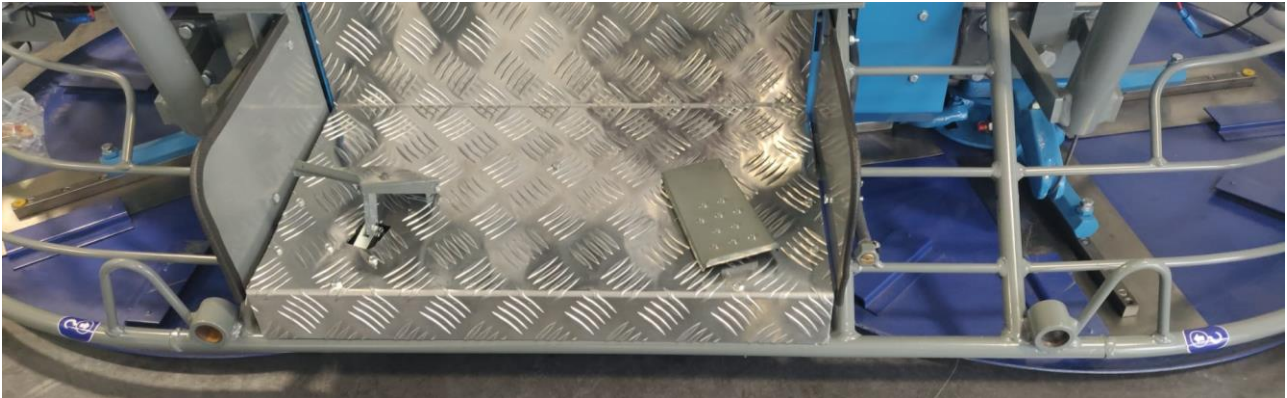
Refer to your engine owner's manual for more safety instructions.

- ❖ Be careful not to come in contact with the muffler when the engine is hot, serious burns may result!
- ❖ Always operate the machine in a seated position to maintain machine balance.
- ❖ The transporter is designed for moving the unit around the job site only. It is not to be used for towing the Ride-On unit off-site.
- ❖ When starting the trowel, do not exceed the ¼ throttle position as recommended. A higher setting could cause the centrifugal clutch to engage, turning the trowel blades.
- ❖ Be careful with the trowel around stub pipes or other obstructions on the floor. Should the machine catch, or hit such an obstruction, serious damage may result to the machine, or operator may be thrown from the machine.
- ❖ Excess surface water may result in sudden loss of control of steering.
- ❖ Disconnect battery before attempting any electrical maintenance.
- ❖ Ensure that the electrical dead-man switch, located on the right hand steering lever is operating. Placing your right hand on the steering lever will engage the safety switch. Removing your hand from the Lever will disengage the safety switch and stop the engine. The engine will not start unless the safety switch is depressed. This safety feature must be used as designed

MACHINE LIFTING:

- ❖ There are four lifting points on the machine frame each marked with this symbol.





IMPORTANT: WHEN USING LIFTING CHAINS OR WEBBING USE ALL FOUR LIFTING POINTS ON THE MACHINE FRAME AND ENSURE CHAIN LENGTHS OR WEBBING ARE OF EQUAL LENGTHS IN ORDER TO ENSURE THE MACHINE IS BALANCED AND THAT THE WEIGHT IS DISTRIBUTED EQUALLY



IMPORTANT: UNDER NO CIRCUMSTANCES STAND BENEATH THE MACHINE WHEN HOISTED!

4. ASSEMBLY INSTRUCTIONS

BATTERY – SHIPPED DRY – NO ACID

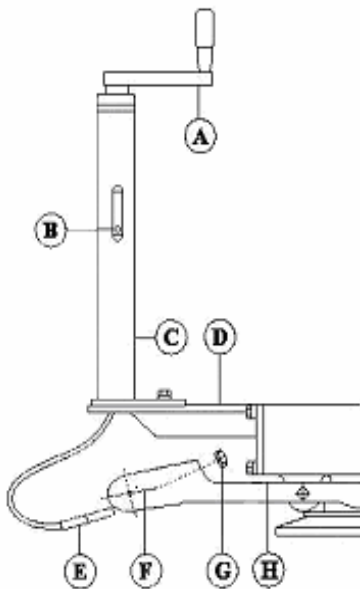
Connect and secure the battery cables before attempting starting procedures.

STEERING HANDLE ASSEMBLY

The steering handles are shipped ready to connect.

Position the handles over the handle sleeves so that the set-screws (2 per handle) are lined up with the tapped holes on the sleeves. Tighten the set-screws and test the mobility of the handles.

PITCH CONTROL ASSEMBLY



Bolt pitch control tube (C) to pitch control bracket (D) with bolts provided. Put cable end (E) through yoke arm (F) and secure with nylon insert locknut (G). For proper cable adjustment, turn crank (A) counter-clockwise to the stop position. Tighten nut (G) until all slack in the cable is removed. If more than 2 or 3 threads show through the nut, it should be turned back and the guide screw (B) moved to the next lower hole. Tension in the cable should then be readjusted. After adjusting tension, turn hand crank full clockwise (ABOUT 24 TURNS) and check for clearance between the yoke arm (F) and the gear box at point (H). There should be enough space to pass a business card through but not more than 1/8 inch.

SEAT ASSEMBLY

Remove protective wrapping from seat. The seat is now ready to secure to the frame using included washers and hex nuts. If the seat adjuster is ordered, the slider bars must be positioned between the seat and the frame using included screws to secure the seat to the sliders, and then securing the sliders to the frame as indicated above.

TRANSPORTER ASSEMBLY

The components of the transporter (handle, frame, wheels, and parts bag) are shipped separately, requiring some assembly. Extend the handle outside the frame. Slide the handle along the frame cross-bar to align the hole on the handle with the hole on the "U" frame. Insert the large hitch pin (part #12487) through the hole to secure the handle to the "U" frame. Position one of the wheels on the axle and secure in place by inserting pin (part #10315) into the hole on the end of the axle. Repeat procedure for the other wheel.



CAUTION: The transporter is designed to be used on the job site only. Do not use the transporter to tow the machine off-site.

5. OPERATING INSTRUCTIONS

STARTING PROCEDURES – WARM TEMPERATURES

- ❖ Prior to starting the trowel, check the engine and gearbox oil levels. Be sure the fuel tank is full.
- ❖ Fuel is not shipped with the unit. Before attempting to start, fill the fuel tank. Check engine and gearbox oil levels. WARRANTY IS VOID IF RUN WITHOUT OIL. Fill tank with safety approved fuel containers. DO NOT MIX OIL WITH FUEL.
- ❖ Maintain contact with the dead-man safety switch. Engine will disengage and stop if safety switch is released. Do not tape, tie-down, or otherwise attempt to bypass safety device.
- ❖ Turn ignition key all the way. Allow engine to warm up before proceeding with full trowel operation.

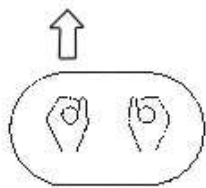
STARTING PROCEDURES – COLD TEMPERATURES

- ❖ Follow same procedure as above but allow for a longer warm up period 3-5 min. (In cold weather oil is much heavier to move. Extra time is required to heat the oil.)

TO STOP ENGINE

- ❖ Bring throttle to low idle, wait a few seconds.
- ❖ Remove left foot from dead-man safety switch.
- ❖ Turn off ignition key.

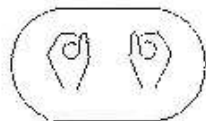
STEERING



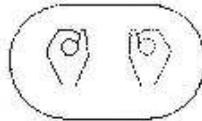
FORWARD



REVERSE



CLOCKWISE



C-CLOCKWISE



LEFT



RIGHT

Guiding the machine on the slab is quite simple but does require some familiarity before actually working with the machine. The controls respond as shown in figure 2a below. Test the machine on a finished section of the floor, with the blades in a flat position, and the engine at a low revolution to gain the necessary feel for the steering. For straight line movement, move both handles as one in the direction you wish to travel. Move the handles in opposite directions to produce rotation on the machines axis. Left handle forward, right handle backward for clockwise rotation. Left handle backward, right handle forward, for counter-clockwise rotation. Sideways direction is achieved by sideways movement of the right handle in the required direction of travel.



WARNING: SERIOUS INJURY OR PROPERTY DAMAGE MAY RESULT DUE TO TEMPORARY LOSS OF CONTROL IF OPERATED WITH EXCESS LIQUID ON THE CONCRETE SURFACE

FLOAT/TROWEL PITCH SETTING

Once you are familiar with the steering functions on a flat floor, you are ready to combine the steering with float/trowel pitch settings to produce the finish you require. The pitch adjustment feature of the Beton Trowel RIDE-ON TROWEL permits quick and accurate pitch changes of the finishing/float blades, without having to stop the machine. Turning the adjustment crank-handle at the end of the pitch control tubes enables you to change the pitch whenever necessary to allow for varying conditions over the slab surface.

Each spider plate is adjusted independently. The pitch setting will affect the steering of your unit. Experiment with the settings as you test drive so you will know what to expect.

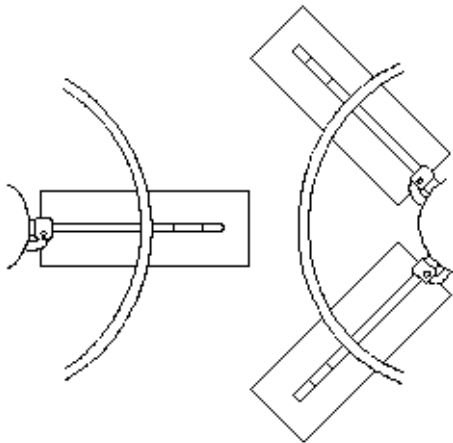


CAUTION: Do not let the machine stand in one spot on the soft concrete; This may place unnecessary strain on the clutch to break it free of the concrete. If the unit has been sitting for any length of time, break it free from the concrete before attempting operation.



CAUTION: When finishing concrete above grade, erect a situation barrier along the edge of the slab as a protective measure. The barrier must follow all applicable codes and should be such that it will stop the trowel from riding over the edge of the slab in case of loss of control.

BLADE SYNCHRONIZATION (SPECIALLY MODIFIED UNITS ONLY)



To avoid blades hitting, make sure spider plates are positioned as shown with respect to each other after performing any maintenance.

TRANSPORTER USE

The transporter is designed to be used on the job site only. Do not use it to tow the machine offsite. The transporter has pick-up brackets located on the inside of the wheels which should be positioned under the pick-up points on the frame. Before connection, the handle will be pointing upwards at approximately a 45 degree angle. Pull the handle down, engaging the transporter and secure the bracket and transporter to the frame by locking the handle bracket in the frame lock by means of the hitch pin. Using the handle as a lever, the ride-on may now be moved. To disconnect the transporter, follow the above steps in reverse

6. MAINTENANCE

PREVENTATIVE MAINTENANCE AND ROUTINE SERVICE PLAN

This trowel has been assembled with care and will provide years of service. Preventative maintenance and routine service are essential to the long life of your trowel. Your dealer is interested in your new machine and has the desire to help you get the most value from it. After reading through this manual thoroughly, you will find that you can do some of the regular maintenance yourself. However, when in need of parts or major service, be sure to see Beton Trowel.

GENERAL

- Keep engine oil clean. Change according to engine manufacturer's specifications.
- Maintain the oil levels in the engine and gearbox assemblies. Change as required.
- Use only clean fuel in the engine.
- Check for loose nuts and bolts on the trowel and tighten as necessary.
- Check "V" belts for wear, replace if worn.
- Grease all fittings daily. See diagram.
- Clean the unit after every use to prevent hardening of concrete residue. Hard concrete is very difficult to remove, greatly increases weight and reduces efficient subsequent operation of unit.
- Check clutch linings regularly for wear. Linings should be changed when 3/4 worn. Do not allow metal to metal contact as this will damage the clutch drum. (New lining is 8mm.)

AIR CLEANER

Maintaining a clean engine will extend engine life. Keep air filter clean at all times. Clean air filter using the recommended solvent. See engine manual for proper cleaning procedure. Let the filter dry before reinstalling.

SPARK PLUG

Check and clean spark plugs regularly. A fouled, dirty spark plug causes hard starting and poor engine performance. Set spark plug gap to recommended clearance. Refer to engine manual.

BELT TENSIONING SPECIFICATIONS



NOTE: Belts may become slightly loose after the first few hours of operation. It is important to retension the belts with the tool provided and use the table given as reference.

LUBRICATION

ENGINE OIL

The long life and successful operation of any piece of machinery is dependent on frequent and thorough lubrication. Before using the trowel, always check your engine for oil. Use proper engine oil as recommended in the engine manufacturer's manual. Fill crankcase to levels as recommended.

SPIDER PLATE

There are 8 (eight) grease fittings on the spider plates, 4 (four) on each must be greased daily.
SPIDER PLATES MUST BE GREASED EVERY TIME MACHINE IS USED.

GEARBOX

Check the oil level sight plugs on both gearboxes daily to ensure the oil is half way on the site glass. Top up with Agma 8 compounded gear oil only. Gearbox capacity on the BT900 is 27oz./767ml.

TO CHANGE GEARBOX OIL

Place a pan beneath the drain plug to catch the oil. Remove the drain plug and the filler plug from the gearbox. After the oil has drained completely, replace the drain plug and tighten. Fill the gearbox through the filler plug with 27oz./767ml. of Agma 8 compounded gear oil. Replace the filler plug and tighten.

GREASE FITTINGS

There are 6 bearings in total. Grease all bearings and U-joints to ensure adequate supply of lubricant. They are located above the gearboxes (2 per gearbox) and 2 located in the drive system. The U-joints are located in the drive system as well.

MAINTENANCE PLAN

Routine Service Intervals - Continued -		Each use	After 1.5 months or 50 hrs	Each 3 months or 100 hrs	Each 6 months or 200 hrs	Each 9 months or 300 hrs	Each 12 months or 400 hrs
Drive Train:							
Bearings	Lubricate	o	o	o	o	o	o
Universal couplings	Lubricate			o	o	o	o
Belt tension / Condition	Check	o	o	o	o	o	o
Clutch / Pulley operation	Check	o	o	o	o	o	o
LH spider plate assembly	Check	o		o	o	o	o
	Lubricate	o	o	o	o	o	o
RH spider plate assembly	Check	o		o	o	o	o
	Lubricate	o	o	o	o	o	o
Gearboxes:							
LH Gearbox oil	Check Level	o	o	o	o	o	o
	Change				o		o
RH Gearbox oil	Check Level	o	o	o	o	o	o
	Change				o		o
Gearbox breathers	Check operation			o	o	o	o
Retardant Spray System:							
Water pump operation	Check	o	o	o	o	o	o
Spray nozzles	Clean	o					
Retardant Fluid	Check levels	o					

Routine Service Intervals		Each use	After 1.5 months or 50 hrs	Each 3 months or 100 hrs	Each 6 months or 200 hrs	Each 9 months or 300 hrs	Each 12 months or 400 hrs
General Inspection:							
Operation of lights	Check		o	o	o	o	o
Battery	Clean & Check			o	o	o	o
	Recharge			o	o	o	o
	Replace						2 yrs
Guards	Check	o	o	o	o	o	o
Warning stickers	Check		o	o	o	o	o
Test run:	Check operation		o	o	o	o	o
Controls:							
Dead-man switch operation	Check	o	o	o	o	o	o
Throttle pedal operation	Check	o	o	o	o	o	o
Steering linkages	Check	o	o	o	o	o	o
	Lubricate		o	o	o	o	o
	Replace						As req'd
Pitch control levers	Check	o	o	o	o	o	o
	Lubricate		o	o	o	o	o
Joystick controls (N/A)	Check	o					
Hydraulic system (N/A)	Check levels			o	o	o	o
	Check hoses			o	o	o	o
	Replace hoses						2 yrs
Engine:							
Fuel pipes & clamps	Check		o	o	o	o	o
	Replace						2 yrs
Engine oil	Check Level	o	o	o	o	o	o
	Change		o		o		o
Engine oil filter	Replace				o		o
Oil cooler	Clean			o	o	o	o
Cooling Fins	Clean		o	o	o	o	o
Air cleaner	Check - clean	o	o	o	o	o	o
	Replace						o
Air Intake Line	Check				o		
	Replace						2 yrs
Fan Belt	Check tightness				o		o
	Replace						500 hrs
Valve clearance	Check-adjust				o		o
Fuel filter	Check & Clean			o	o	o	o
	Replace				o		o
Fuel Tank	Clean						500 hrs
Fuel Injection Nozzles	Check pressure						500 hrs
Fuel Injection Timer	Check						500 hrs
Injection Pump	Check						500 hrs
Engine wiring	Check						o

SERVICE

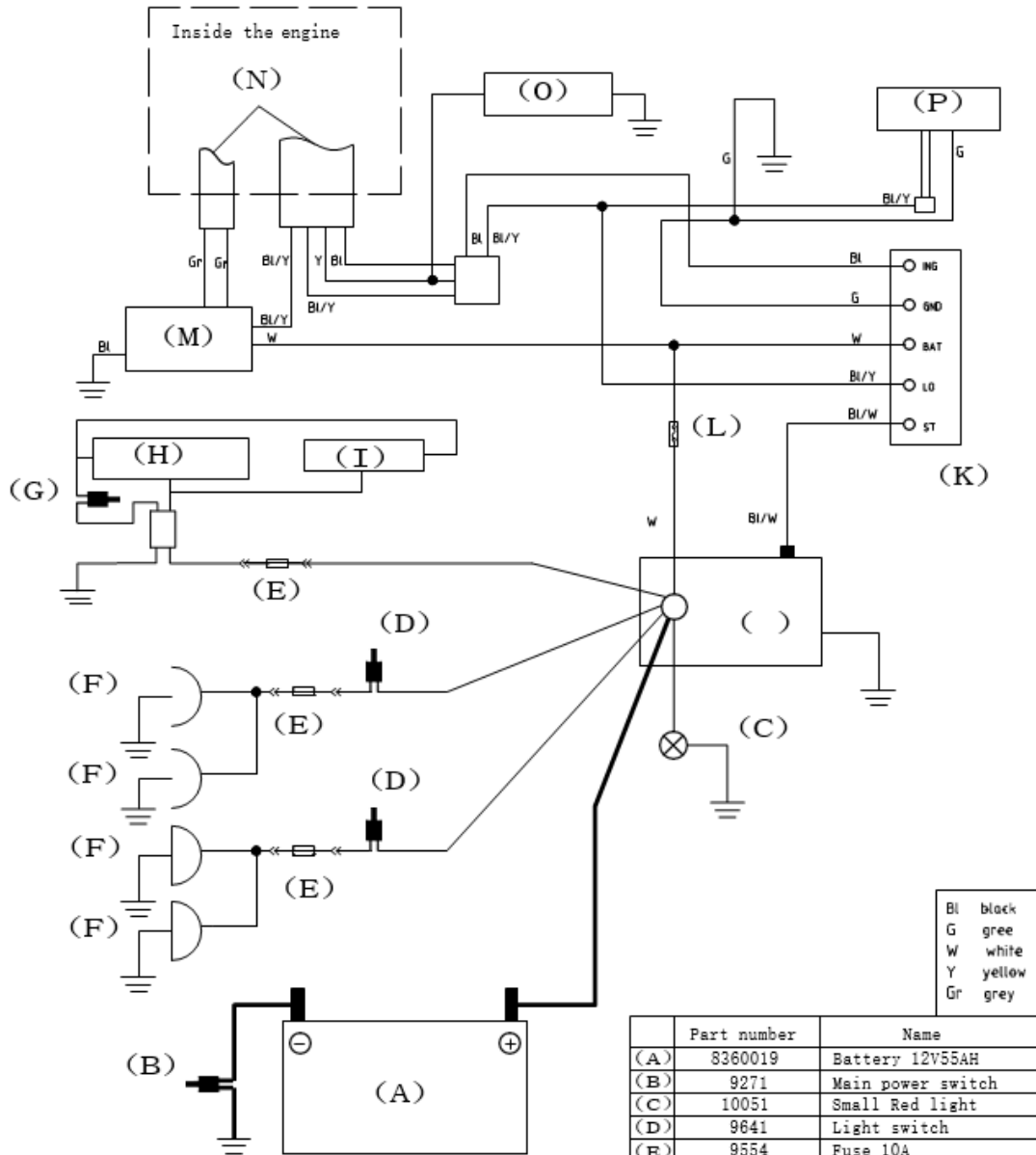
- ❖ Due to the nature and environment of use, power trowels are exposed to severe operating conditions.
- ❖ Some general maintenance guidelines will extend the useful life of your trowel.
- ❖ The initial service for your power trowel should be performed after 25 hours of use, at which time your mechanic (or authorized repair shop) should complete all of the recommended checks in the schedule above.
- ❖ Regular service according to the schedule above will prolong the life of the power trowel and prevent expensive repairs.
- ❖ Keeping your power trowel clean and free from concrete residue is the single most important regular maintenance operation, over and above the checks in the service schedule above, that can be performed.
Components such as oil seals, belts, drive line parts and bearings are prone to premature wear from exposure to concrete residue. Using a spray-on release agent on your power trowel before each use will make clean-up after use easy and extend the time between replacement of most of the wearing components of the machine.
- ❖ After each use your power trowel should be cleaned to remove any concrete residue from the undercarriage and surrounding components. Use of a power washer will make clean up quick and easy, especially if a release agent was applied prior to use.
- ❖ In the Service Schedule above, items that should be checked, replaced or adjusted are indicated by “o” in the appropriate column. Not all power trowel models include the same features and options and as such not all service operations may have to be performed. For ease of recording place a checkmark (✓) through the “o” when the item is complete. If an item is not required or not completed place an “x” through the “o” in the box.
- ❖ For all fuel-line powered trowels the governed speed of the engine is 2000 to 3600 rpm. See engine manufacturer’s manual for exact specifications. Care should be used when making any adjustments to the power trowel not to change the governed speed. Increasing the governed speed of the engine may lead to premature failure and void the manufacturer’s warranty.
- ❖ Failure to have your power trowel regularly serviced and properly maintained in accordance with the manufacturer’s instructions will lead to premature failure and void the warranty.

7. LABELS

SAFETY PRECAUTIONS	
	<p>! DANGER</p> <p>EXPLOSION HAZARD Never operate the machine in an explosive atmosphere, near combustible materials or where ventilation does not clear exhaust fumes.</p>
	<p>WARNING</p> <p>BURN HAZARD Never come into contact with the engine or muffler when engine is operating or shortly after it is turned off. Serious burns may occur.</p>
	<p>! CAUTION</p> <p>ROTATING HAZARD Never place hands or feet inside safety guard rings. Serious injury will result from contact with rotating blades.</p>
	<p>! CAUTION</p> <p>MOVING PARTS Before starting the machine ensure that all guards and safety devices are in place and functioning properly.</p>
	<p>! ATTENTION</p> <p>READ OWNERS MANUAL Read and understand operator's manual before using this machine. Failure to follow operating instructions could result in serious injury or death.</p>

8. TECHNICAL DATA

ELECTRICAL WIRING SCHEME



Bl black
G gree
W white
Y yellow
Gr grey

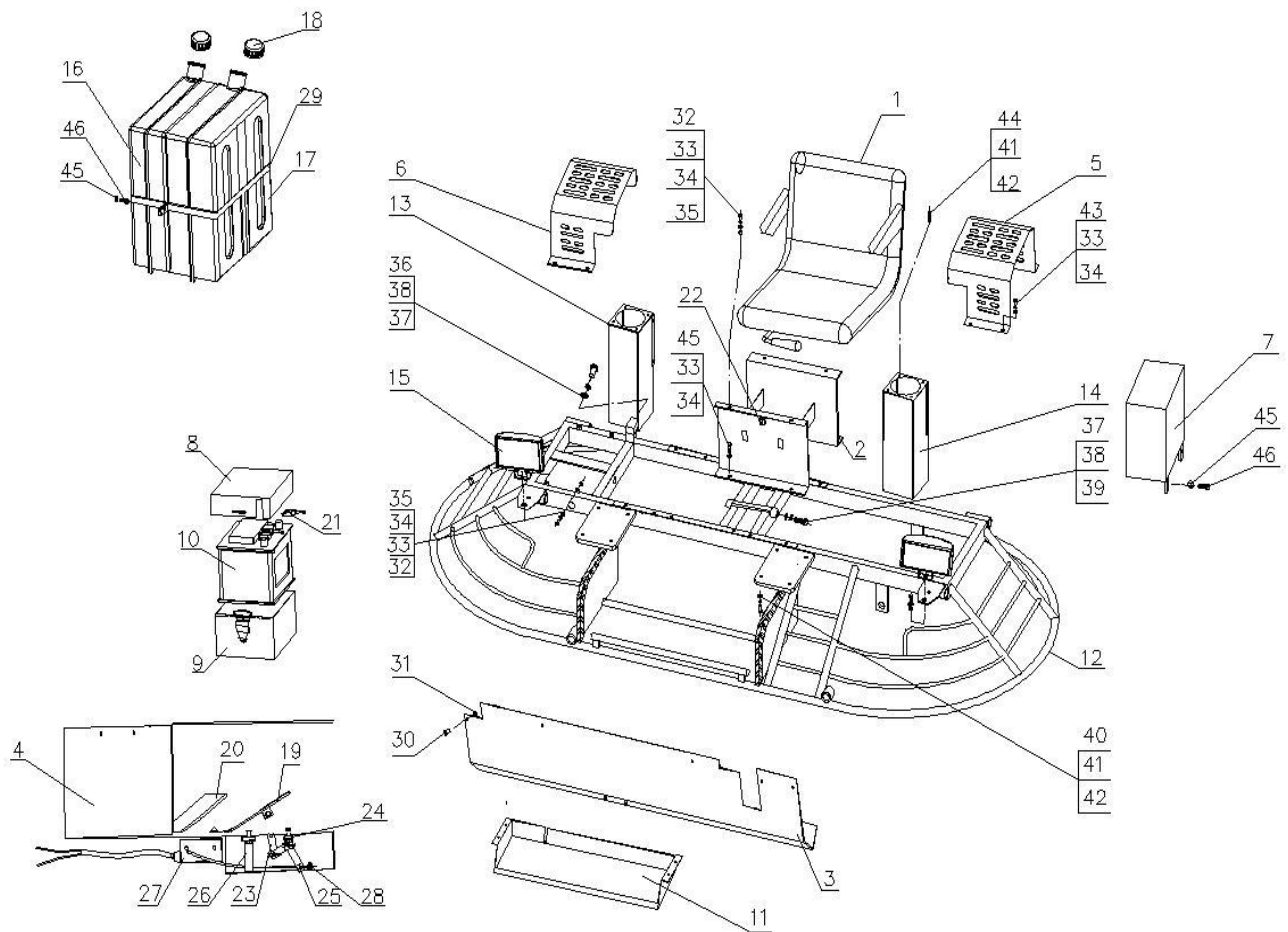
	IGN	GND	BAT	LD	ST
OFF					
ON	○-○	○-○	○-○		
START	○-○	○-○	○-○		

	Part number	Name
(A)	8360019	Battery 12V55AH
(B)	9271	Main power switch
(C)	10051	Small Red light
(D)	9641	Light switch
(E)	9554	Fuse 10A
(F)	9970	LED Light
(G)	9910	Water spray button
(H)	8361142	Electormagnetic valve
(I)	8361067	Water pump
(J)		Start relay
(K)		Engine key
(L)	31000037c	Main fuse
(M)	(GX690)	Rectifier regulator
(N)		Wires
(O)	9555	Deadman switch
(P)	9909	Hour meter

Nijverheidsstraat 10, 1840 Londerzeel/Belgium
 Tel: +32 (0)52 315 350 - Tel: +32 (0)52 315 351 - Fax: +32 (0)52 315 359
 E-mail: info@betontrowel.com - www.betontrowel.com
 BE 0821.249.312

9. PARTS

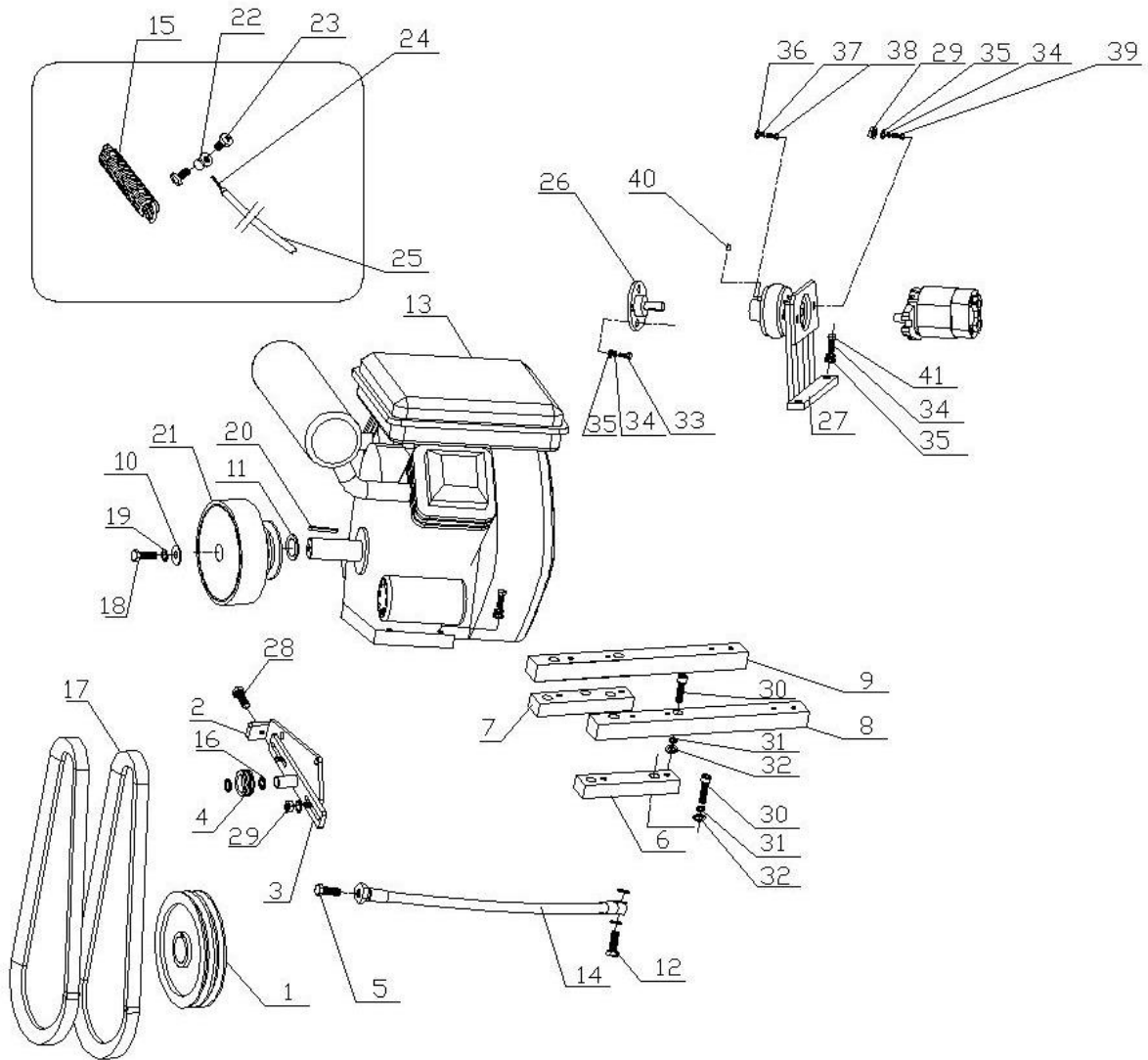
FRAMEWORK AND GUARD RING



Item No.	Part No.	Description	Qty.
1	836H0453	SEAT	1
2	836H0879	SEAT FRAME	1
3	836H0538	COVER PLATE, BOTTOM	1
4	836H1436	FOOT PLATE	1
5	836H0539L	COVER PLATE, LEFT	1
6	836H0539R	COVER PLATE, RIGHT	1
7	8360459	BELT GUARD	1
8	8360463	BATTERY COVER	1
9	8360464	BATTERY BOX	1
10	8360019	BATTERY	1
11	8361437	COVER PLATE, THROTTLE	1
12	836H0452	GUARD RING	1
13	836H0540R	HANDLE FRAME, RIGHT	1
14	836H0540L	HANDLE FRAME, LEFT	1
15	8360598	LIGHT	2
16	836H1073	WATER TANK	1
17	8361073A	PETROL TANK	1
18	8360199	CAP	2
19	8360592a	THROTTLE CONTROL PEDAL	1
20	8361062a	SAFTY SWITCH PEDAL	1
21	8360968	CONNECTOR, BATTERY	2
22	8369539	SWITCH	1
23	8361425	FOOT THROTTLE PART	1
24	8361426	FOOT THROTTLE PART	1
25	8361427	FOOT THROTTLE PART	1
26	8361428	FOOT THROTTLE PART	1
27	8369555	SAFTY SWITCH	1
28	4365403	CLAMP	1
29	836H1378	TANK FRAME	2
30	9902	BOLT	4
31	9023	NUT	4
32	9098	BOLT	8
33	9037	SPRING WASHER	20
34	9038	WASHER	20
35	9306	NUT	8
36	9511	BOLT	1
37	9661	WASHER	3
38	9504	SPRING WASHER	3
39	9512	BOLT	2
40	9133	BOLT	8
41	9022	SPRING WASHER	16
42	9330	WASHER	16

43	9097	BOLT	12
44	9380	BOLT	8
45	9236	NUT	4
46	9040	BOLT	4

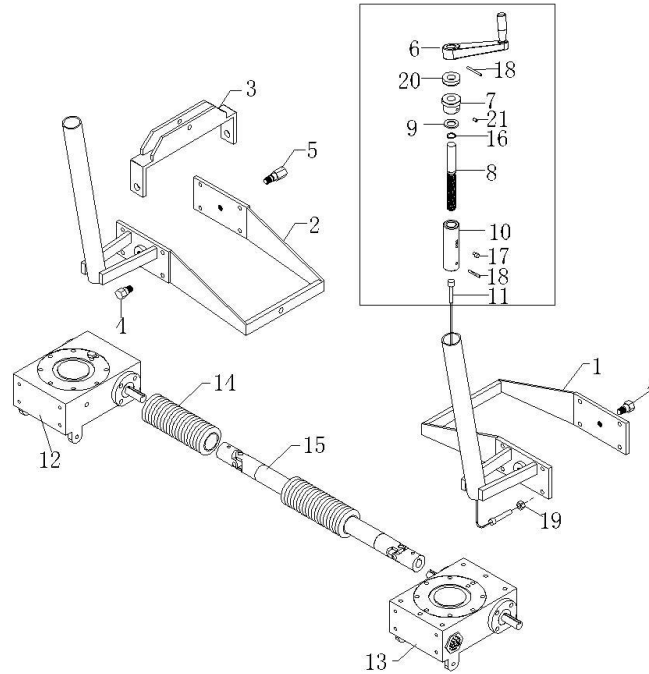
POWER SYSTEM



Nijverheidsstraat 10, 1840 Londerzeel/Belgium
 Tel: +32 (0)52 315 350 - Tel: +32 (0)52 315 351 - Fax: +32 (0)52 315 359
 E-mail: info@betontrowel.com - www.betontrowel.com
 BE 0821.249.312

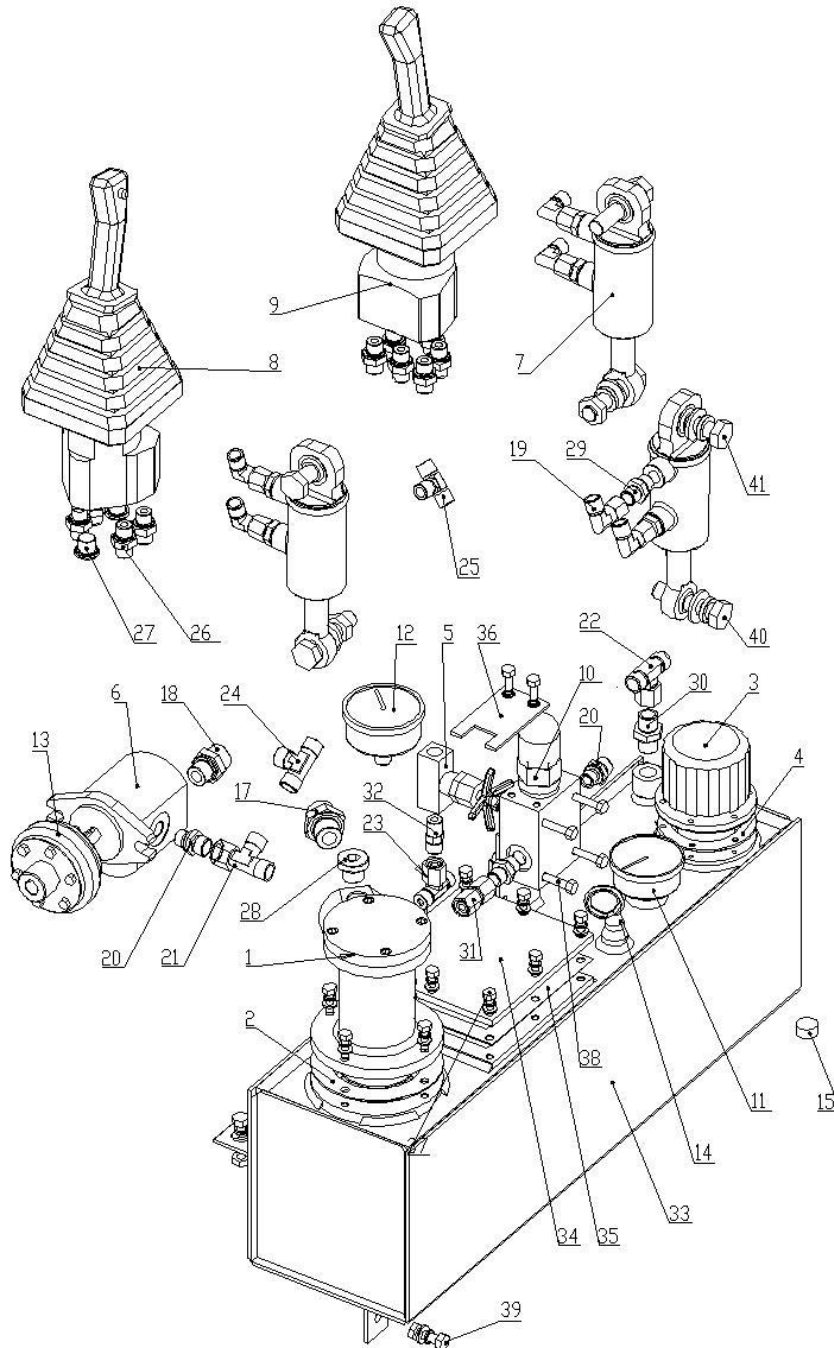
Item No.	Part No.	Description	Qty.
1	8360314	PULLEY	1
2	8361458	MOUNGTING PLATE, PULLEY	1
3	8361125	ADJUST PLATE, PULLEY	1
4	8361461a	TENSIONER	1
5	8361610	BOLT	1
6	8361423	ENGINE MOUNTING BAR	1
7	8361424	ENGINE MOUNTING BAR	1
8	836H1423	ENGINE MOUNTING BAR	1
9	836H1424	ENGINE MOUNTING BAR	1
10	JG846A030006	BUSHING	1
11	8360060	WASHER	1
12	8361611G	BOLT	1
13	31000037	GX690	1
14	8361607G	OIL PIPE	1
15	8361786	SPRING	1
16	8369063A	BEARING	2
17	8360249	BELT	2
18	8360529	BOLT	1
19	8360064	SPRING WASHER	3
20	8369155	KEY	1
21	8361815	CLUTCH	1
22	4365403	CLAMP	1
23	8369019	BOLT	2
24	8369522	THROTTLE CABLE	1
25	8369523	THROTTLE CABLE SLEEVE	1
26	836H0551	FLANGE	1
27	836H0552	SUPPORTING FRAME	1
28	9605	BOLT	1
29	9036	NUT	4
30	9018	BOLT	9
31	9046	SPRING WASHER	9
32	9047	WASHER	9
33	9098	BOLT	4
34	9037	SPRING WASHER	6
35	9038	WASHER	6
36	9330	WASHER	12
37	9022	SPRING WASHER	12
38	9093	BOLT	12
39	9232	BOLT	2
40	9447	BOLT	2
41	9262	BOLT	4
42	9040	BOLT	4

STEERING SYSTEM



Item No.	Part No.	Description	Qty.
1	8360484a	BRACKET, LEFT	1
2	8360491a	BRACKET, RIGHT	1
3	8360494a	BRACKET	1
4	8360485a	BOLT	3
5	836H0492a	BOLT	1
6	B8360470	PITCH HANDLE	2
7	4465502	BUSHING	2
8	4365503	ADJUST SHAFT	2
9	4365504	WASHER	2
10	4465505	ADJUST SHAFT BUSHING	2
11	8360973	PITCH CONTROL CABLE	2
12	8364000R	GEARBOX, RIGHT	1
13	8364000L	GEARBOX, LEFT	1
14	8360489	RUBBER COVER	2
15	8360488	JOINT SHAFT	1
16	9027	WASHER	2
17	9028	BOLT	2
18	9157A	PIN	4
19	9016	NUT	2
20	9025	BEARING	2
21	9093	BOLT	2

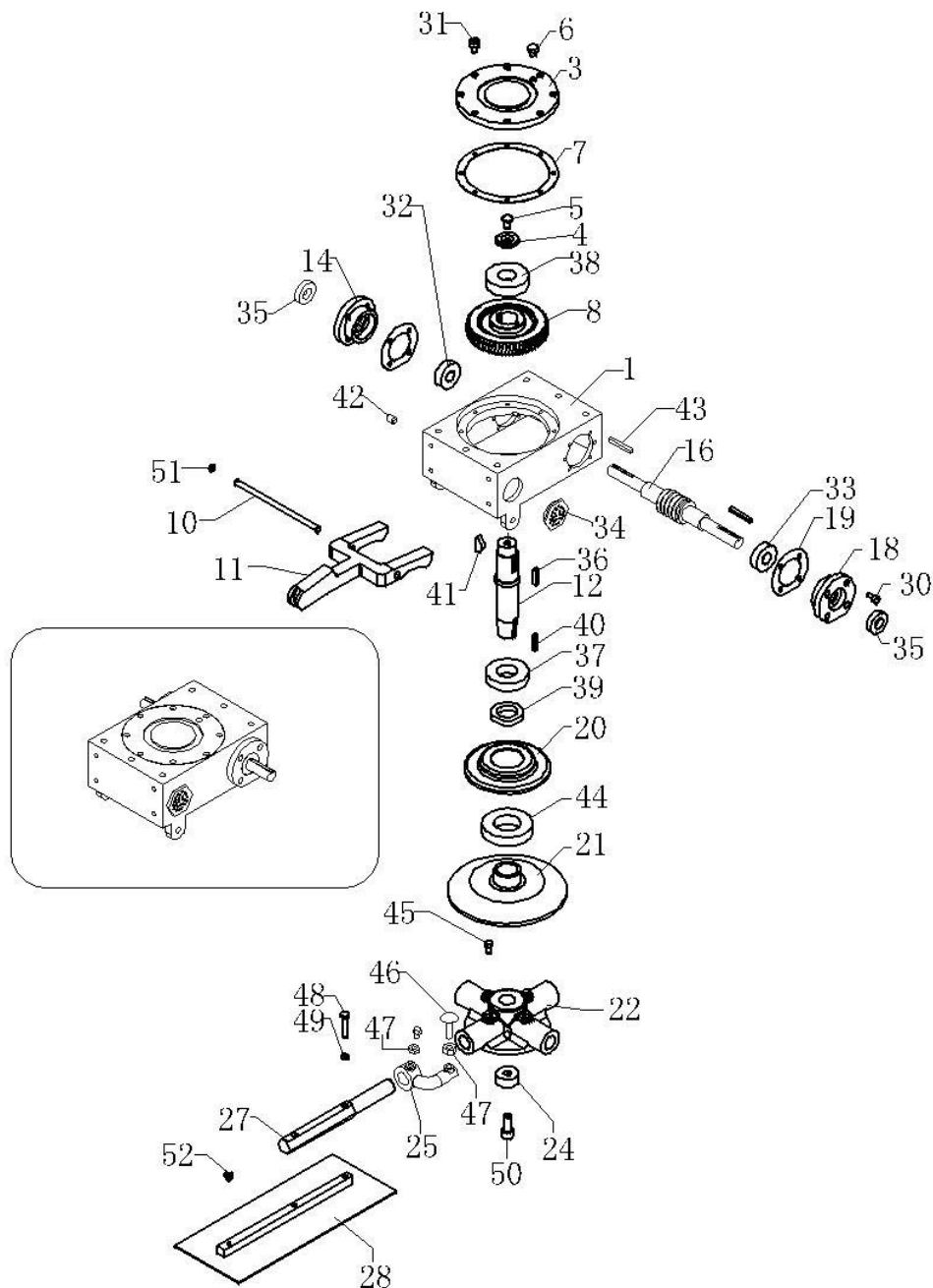
HYDRAULIC SYSTEM



Nijverheidsstraat 10, 1840 Londerzeel/Belgium
 Tel: +32 (0)52 315 350 - Tel: +32 (0)52 315 351 - Fax: +32 (0)52 315 359
 E-mail: info@betontrowel.com - www.betontrowel.com
 BE 0821.249.312

Item No.	Part No.	Description	Qty.
1	9791	OIL FILTER	1
2	9791-DP	SHIMMING	1
3	9793	AIR FILTER	1
4	9793-DP	SHIMMING	1
5	9795	VAVLE	1
6	9796	HYDRALIC PUMP	1
7	9798	HYDROCYLINDER	3
8	9801-Z	HYDRAULIC CONTROL LEVER	1
9	9801-Y	HYDRAULIC CONTROL LEVER	1
10	9803	SPILL VAVLE	1
11	9805	TEMPERATURE METER	1
12	9807	OIL PRESSURE METER	1
13	9809	COUPLING	1
14	9812-836H	OIL GAUGE	1
15	9811	PLUG	1
17	9815	CONNECTOR	1
18	9816	CONNECTOR	1
19	9817	CONNECTOR	6
20	9818	CONNECTOR	2
21	9819	TEE CONNCTOR	1
22	9820	TEE CONNCTOR	1
23	9821	TEE CONNCTOR	1
24	9822	TEE CONNCTOR	1
25	9823	TEE CONNCTOR	1
26	9824	CONNECTOR	10
27	9825	PLUG	2
28	9826	PLUG	1
29	9827	CONNECTOR	7
30	9828	CONNECTOR	1
31	9829	CONNECTOR	1
32	9830	CONNECTOR	1
33	836H-YX	OIL TANK	1
34	836HYX-FLG	FLANGE	1
35	836HYX-FLG-DP	SHIMMING	1
36	836H-FJ3	BASE PLATE	1
37	M6*16	HARDWARE KIT	14
38	M6*55	HARDWARE KIT	4
39	M8*20	HARDWARE KIT	4
40	M14*60	HARDWARE KIT	2
41	M14*50	HARDWARE KIT	4

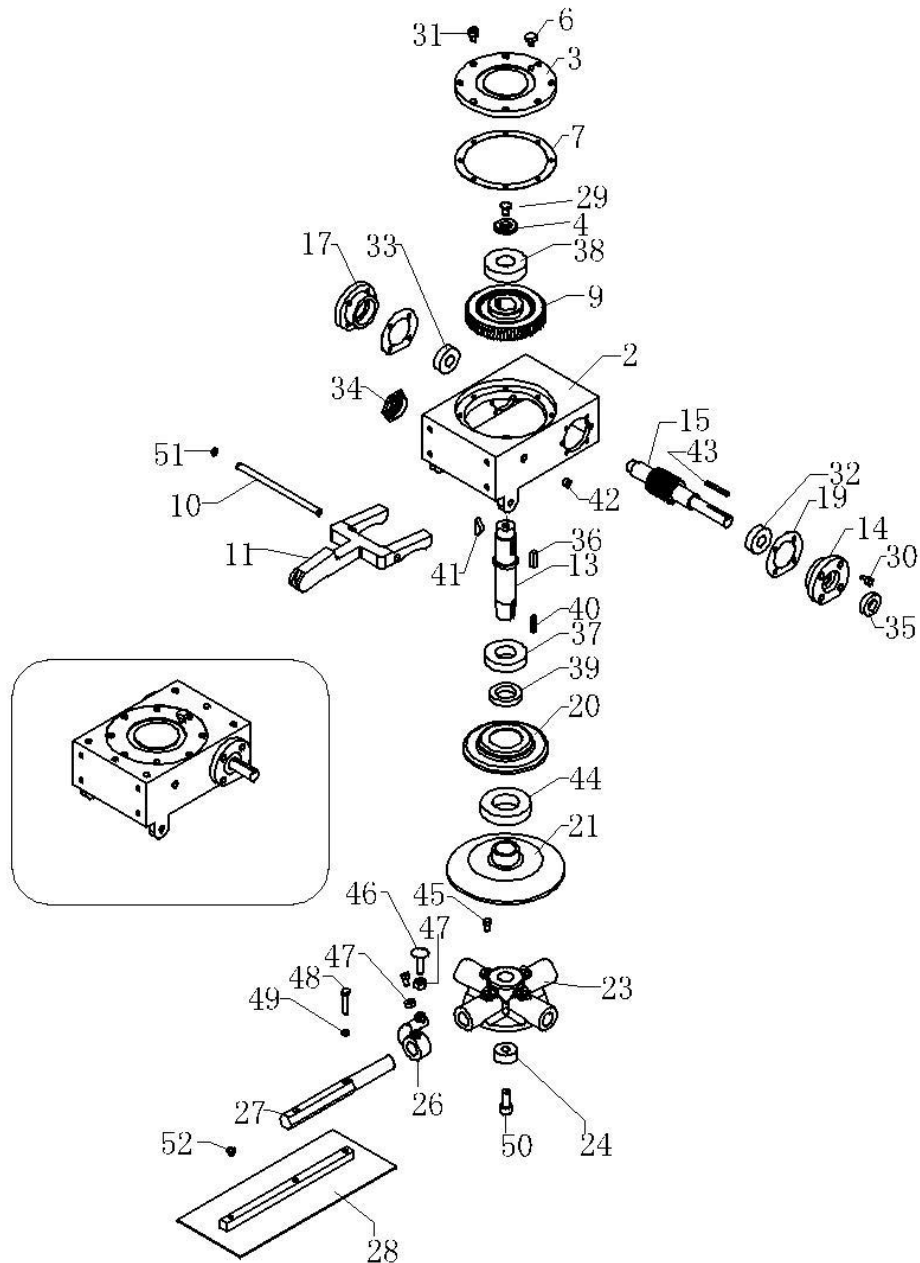
GEARBOX ASSEMBLY LEFT



Item No.	Part No.	Description	Qty.
1	8364003L	GEARBOX CASING, LEFT	1
3	8364005	GEARBOX COVER	1
4	4364006	PRESSURE WASHER	1
5	4364007	BOLT	1
6	4364100	RELEASE VALVE	2
7	4464008	SHIMMING	1
8	8364010L	BRONZE GEAR, LEFT	1
10	4465509	SHAFT, YOKE ARM	1
11	4465510	YOKE ARM	1
12	8364011L	MAIN SHAFT, LEFT	1
14	4464012	BEARING FLANGE	1
16	8364013L	COUNTER SHAFT, LEFT	1
18	8364014	BEARING FLANGE	1
19	4464015	SHIMMING	2
20	4466002	PRESSURE PLATE COVER	1
21	8366003	PRESSURE PLATE	1
22	8366005L	LEFT SPIDER PLATE	1
24	4466004	BUSHING	1
25	4466006	LIFT LEVER	4
27	8366001	TROWEL ARM	4
28	4366100Y	BLADE	4
30	9043	BOLT	12
31	9118	BOLT	8
32	9143	BEARING	1
33	9141	BEARING	1
34	9064	GLASS EYE	1
35	9055	SEAL	2
36	9531	KEY	1
37	9222	BEARING	1
38	9144	BEARING	1
39	9153	SEAL	1
40	9154	KEY	1
41	9156	KEY	1
42	9053	PLUG	2
43	9532	KEY	2
44	9140	BEARING	1
45	9066	BOLT	4
46	9067	BOLT	4
47	9059	NUT	8
48	9071	BOLT	8
49	9037	SPRING WASHER	8
50	9068	BOLT	1

51	9202	RETAINER RING	2
52	9072	PLUG	4

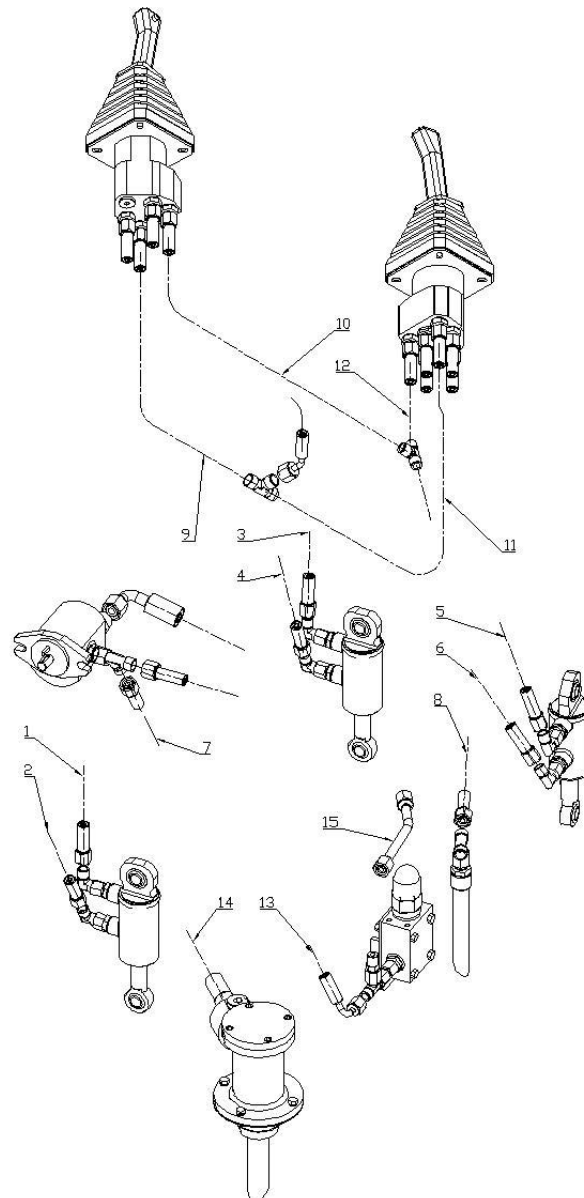
GEARBOX ASSEMBLY RIGHT



Item No.	Part No.	Description	Qty.
2	8364003R	GEARBOX CASING, RIGHT	1
3	8364005	GEARBOX COVER	1
4	4364006	PRESSURE WASHER	1
6	4364100	RELEASE VALVE	2
7	4464008	SHIMMING	1
9	8364010R	BRONZE GEAR, RIGHT	1
10	4465509	SHAFT, YOKE ARM	1
11	4465510	YOKE ARM	1
13	8364011R	MAIN SHAFT, RIGHT	1
14	4464012	BEARING FLANGE	1
15	8364013R	COUNTER SHAFT, RIGHT	1
17	4464014	BEARING FLANGE	1
19	4464015	SHIMMING	2
20	4466002	PRESSURE PLATE COVER	1
21	8366003	PRESSURE PLATE	1
23	8366005R	RIGHT SPIDER PLATE	1
24	4466004	BUSHING	1
26	8366006	LIFT LEVER	4
27	8366001	TROWEL ARM	4
28	4366100Y	BLADE	4
29	9145	BOLT	1
30	9043	BOLT	12
31	9118	BOLT	8
32	9143	BEARING	1
33	9141	BEARING	1
34	9064	GLASS EYE	1
35	9055	SEAL	1
36	9531	KEY	1
37	9222	BEARING	1
38	9144	BEARING	1
39	9153	SEAL	1
40	9154	KEY	1
41	9156	KEY	1
42	9053	PLUG	2
43	9532	KEY	1
44	9140	BEARING	1
45	9066	BOLT	4
46	9067	BOLT	4
47	9059	NUT	8
48	9071	BOLT	8
49	9037	SPRING WASHER	8
50	9068	BOLT	1

51	9202	RETAINER RING	2
52	9072	PLUG	4

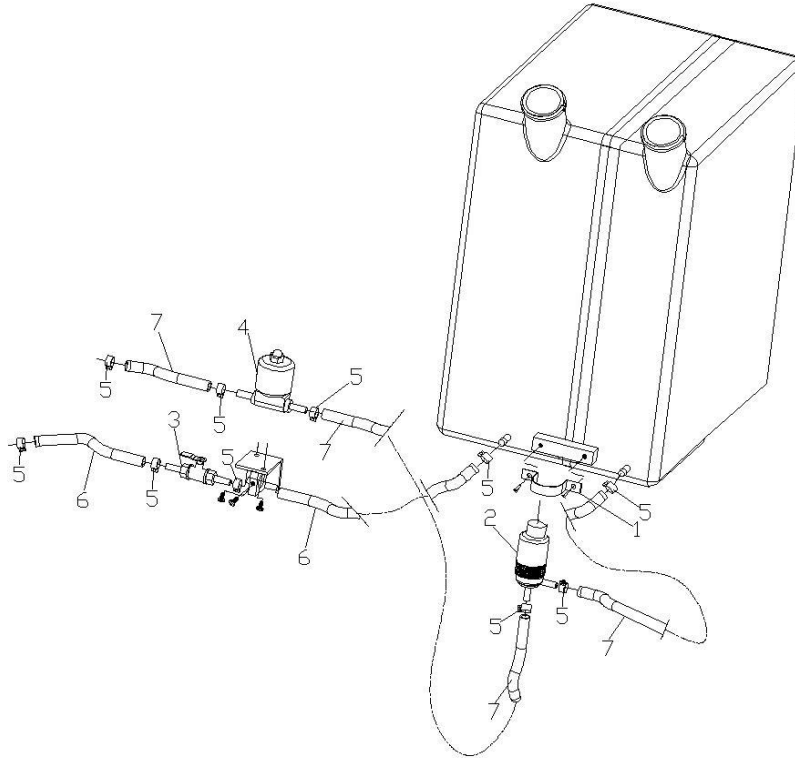
OIL HOUSE



Nijverheidsstraat 10, 1840 Londerzeel/Belgium
Tel: +32 (0)52 315 350 - Tel: +32 (0)52 315 351 - Fax: +32 (0)52 315 359
E-mail: info@betontrowel.com - www.betontrowel.com
BE 0821.249.312

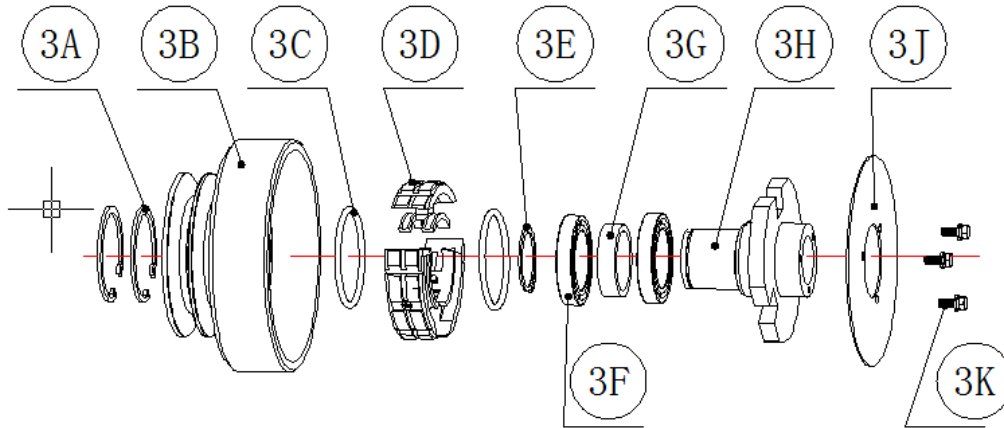
Item No.	Part No.	Description	Qty.
1	836RG-1	HOSE	1
2	836RG-2	HOSE	1
3	836RG-3	HOSE	1
4	836RG-4	HOSE	1
5	836RG-5	HOSE	1
6	836RG-6	HOSE	1
7	836RG-7	HOSE	1
8	836RG-8	HOSE	1
9	836RG-9	HOSE	1
10	836RG-10	HOSE	1
11	836RG-11	HOSE	1
12	836RG-12	HOSE	1
13	836RG-13	HOSE	1
14	836RG-14	HOSE	1
15	836RG-15	HOSE	1

FUEL EN WATER SYSTEM



Item No.	Part No.	Description	Qty.
1	8361144	MOUNTING PLATE, WATER PUMP	1
2	8361067	WATER PUMP	1
3	8361476	VALVE	1
4	8361142	SOLENOID PILOT ACTUATED VALVE	1
5	8361071	JOINT	12
6	8360589	OIL PIPE	2
7	8360754	WATER PIPE	2

CLUTCH ASSEMBLY



Item No.	Part No.	Description	Qty.
3A	9472	CIRCLIP	2
3B	8361815C1	CLUTCH BODY	1
3C	8361815C7	SPRING	2
3D	8361815CA3	SHOES ASSY	1
3E	9471	CIRCLIP	1
3F	9470	BEARING	2
3G	8361815C6	BUSHING	1
3H	8361815C2	SHOES HOLDER	1
3J	8361815C5	COVER	1
3K	9220	BOLT	3
	9022	SPRING WASHER	3
	9330	WASHER	3

**DECLARATION OF CONFORMITY / CERTIFICAT DE CONFORMITE /
GELIJKVORMIGHHEIDSCERTIFICAAT / DECLARACION DE CONFORMIDAD /
DECLARACAO DE CONCORMIDADE / DICHIARAZIONE DI CONFORMITA**

Model : BT900

We Beton Trowel NV

Declare under our sole responsibility that the product to which this declaration relates is in conformity with the following standards or other normative documents.

Declarons sous notre responsabilite que le produit cette declaration est conforme aux norms suivantes ou d'autres documents habituels.

Verklaren onder onze verantwoordelijkheid dat het product naar welke de verklaring verwijst conform de volgende standards of anders gebruikelijke documenten is.

Declaramos bajo nuestra unica responsabilidad que el producto en lo que esta declaracion concierne, es conforme con la siguiente normative u otros documentos.

Declara sob sua responsabilidade que o produto a quem esta declaracao interessar, esta em conformidade com os seguintes documentos legais ou normas directivas.

Dichiariamo sotto la ns. Unica responsabilita che il prodotto al quale questa dichiarazione si riferisce, e fabbricato in conformita ai seguenti standard e documenti di normative.

EN 349:2008+A1:2008 EN 12100:2010 EN12649:2008+A1:2011 EN ISO 5349-2:2001 +A1:2015

Following the provisions of Directives:

Suivant les directives determinees:

Volgens de vastgestelde richtlijnen:

Siguiendo las directivas:

No sequimento das clausulas da Directivas

Seguendo quanto indicato dalla Direttivas:

2006/42/EC Machinery Directive

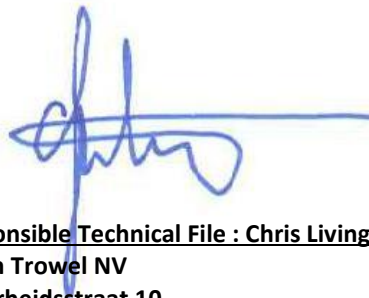
2000/14/EC Noise Directive

2001/95/EC General Product Safety Directive

2002/95/EC Reduction of Hazardous Waste Directive

LVD2014/35/EU Low Voltage Directive

2004/30/EU Electromagnetic Compatibility



**Responsible Technical File : Chris Livingston for
Beton Trowel NV
Nijverheidsstraat 10
B-1840 Londerzeel
Belgium**

Tel 0032 52315350

Fax0032 52303739

25th August 2016